

J. Mallahan

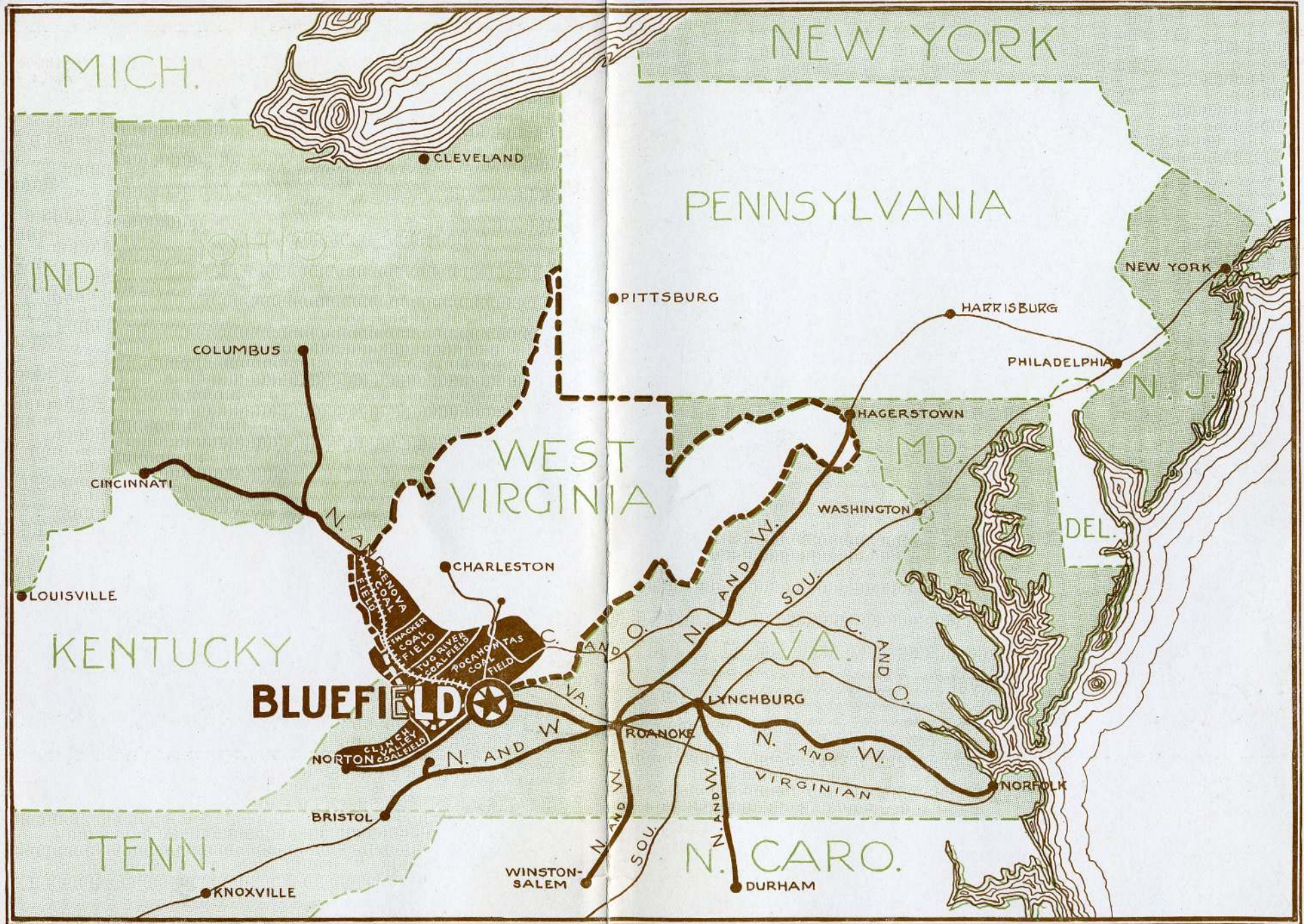
P3222

J. Mallahan

Bluefield West Virginia





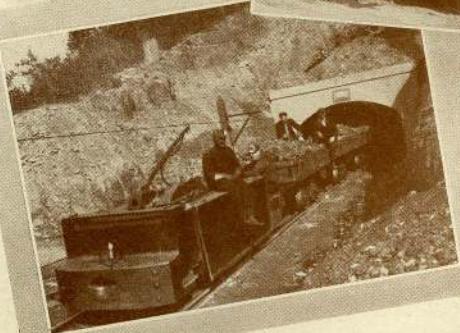
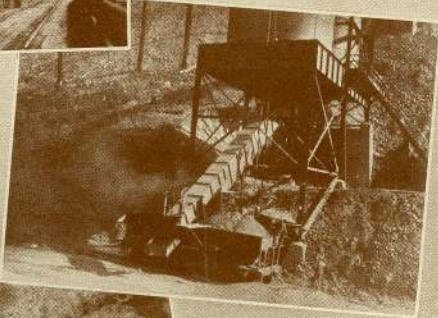
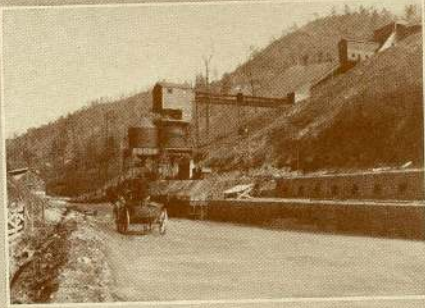


p3222

Bluefield West Virginia

The Gateway
To Nature's Storehouse
Of Her Greatest Wealth





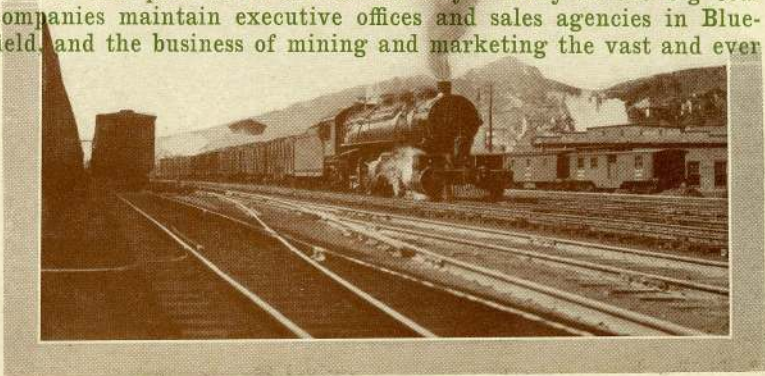
Scenes showing a typical West Virginia Coal Tippie; a glimpse of the Commissary, the Railway Station, Supply Cars, etc.; the Bluefield Offices of a Mine; a loaded "Battleship" being released; and a Powerful Motor hauling the coal out of the mine.

Bluefield, West Virginia

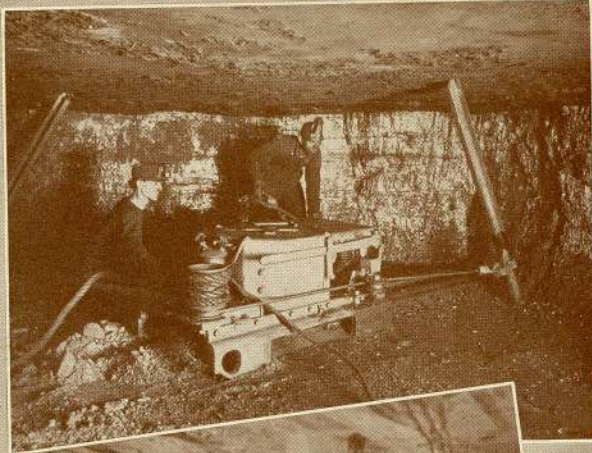
Bluefield is the foremost city of Southern West Virginia. It has grown and continues to grow faster than any city in West Virginia, and this growth is fostered by substantial business conditions which make for community prosperity. Situated midway between Cincinnati on the west, and Norfolk, Virginia, on the east, it has direct rail communication with the Ohio River city and the seacoast city, by the Norfolk and Western Railway, whose divisional headquarters and shops are located in Bluefield. Bluefield's growth, as shown by the census of 1910, was 142 per cent in ten years, and the indications now are that this increase will continue in an even greater ratio during the ten years intervening before the next census be taken. Bluefield's sky-line is taking on the aspects of a metropolitan city. Tall, modern fire-proof, and commodious office buildings, with floor space pre-empted in advance, are in course of construction, while still others are projected; new businesses are being established, while those already established are prospering, and the bank clearances of the city's prosperous financial institutions, increasing with each month, show, not only a steady increase in the volume of business being done in Bluefield, but prove most conclusively how substantial is the growth which the city is attaining.

COAL-FIELDS

There is a reason for Bluefield. It is the gateway to the Pocahontas coal-fields. Situated on the crest of the Alleghany Mountains, on the immediate east of these highly productive fields, it is not only the distributing point, both to and from the many mines and towns in the fields, but it is the "clearing house" for the coal product in a financial way. Many of the big coal companies maintain executive offices and sales agencies in Bluefield, and the business of mining and marketing the vast and ever



Bringing the "Black Diamond" into Bluefield.

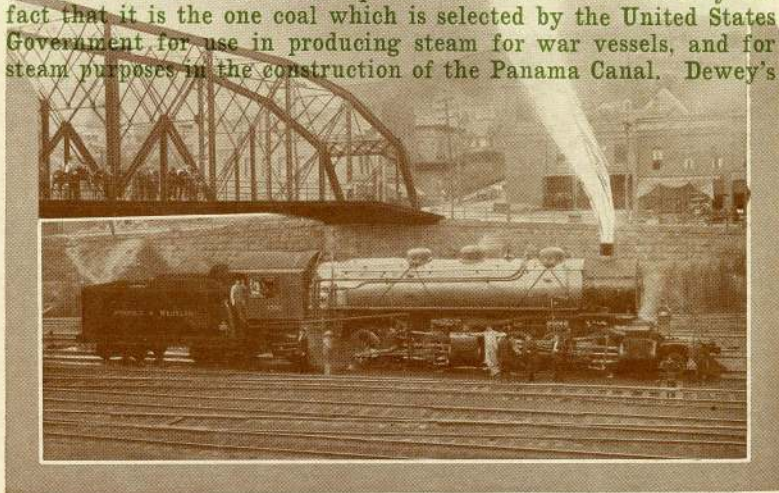


A Cutting Machine at work on a seven-foot seam of coal; a "Black Diamond" Express on its way to daylight; and the type of Motive Power used in the mines.

Bluefield, West Virginia

increasing tonnage of the big mines is conducted from the Bluefield offices. The many large company stores scattered through the coal-fields trade direct with the immense wholesale houses of Bluefield, as likewise do the independent merchants whose stores are legion throughout the length and breadth of the coal-producing region. The supply houses located in Bluefield also have large demands made upon their complete stocks by the mines, and the vast sum of money, into which the huge coal output of the Virginia and West Virginia coal-fields is converted, finds its final clearance through the Bluefield banks.

To secure a grasp of Bluefield's possibilities, one must naturally have a complete conception of the immensity and magnitude of the coal-fields contiguous and contributory to Bluefield, for coal, after all, is the lifeblood of Bluefield. The coal-fields—that is the Pocahontas, the Clinch Valley, the Tug River and the Thacker fields, all under active production, and which are computed to have, at the lowest estimate, a two-hundred-year supply of high-grade fuel under any probable scale of operation—cover an area of approximately one hundred thousand square miles, showing throughout the mountains a continuous seam of coal of varying thicknesses. There are four distinct varieties of coal, as shown by the geological survey now on file at Morgantown, West Virginia. The Pocahontas is a particularly high-grade coking and steam coal, bearing the reputation of being the best steam coal in the world—a reputation which is evidenced by the fact that it is the one coal which is selected by the United States Government for use in producing steam for war vessels, and for steam purposes in the construction of the Panama Canal. Dewey's



One of the Big Type of Engines used for hauling coal over the hills.

Bluefield, West Virginia

fleet moved to Manilla Bay under steam produced from Pocahontas coal, when he destroyed the Spanish fleet in that memorable engagement, and Sampson's fleet was burning Pocahontas coal when Cervera was so terribly licked at Santiago.

Along the Norfolk and Western, which, with its main line and various divisions, penetrates to every portion of these fields, are located Pocahontas and Tazewell, Virginia, and Bramwell, Welch, Keystone and Williamson, West Virginia, all prosperous and growing communities with large growing populations, and each, being accessible to Bluefield by rail, is a feeder for the larger city. By a branch line into Matoaka, West Virginia, the Norfolk and Western taps the immense coal fields opened up by the Virginian Railway, and much of the trade of this prosperous section is thereby diverted to Bluefield.

NATURAL RESOURCES

Under the caption, "Natural Resources," as applied to the section in which is situated Bluefield, coal of course is the first consideration, but Bluefield has inherited from nature much more than coal. Limestone, of the very finest quality for cement purposes, abounds on all sides of Bluefield. Clay and shale, than which there is none better for brick making, is found in large quantities in and about the city, and there is within a ten miles radius of the city enough oak and poplar with which to keep a large furniture factory running continuously for years to come.

Not far distant from Bluefield, and on a down-hill haul all the way to the city, are rich deposits of iron ore, which when considered together with the limestone available hereabouts, and the cheap coal to be had in such abundance, makes a successful steel plant in Bluefield more than a possibility. This was noted by B. B. Burns, editor of the "Black Diamond," a coal trade journal, in an article which appeared from his pen as long ago as July 10th, 1910. He said:

"I found in the immediate vicinity of Bluefield some splendid deposits of limestone, and just to the south of it in Clinch Valley, served by one of the branches of the Norfolk and Western Railway, I saw evidences of an abundant deposit of iron ore. I was told by Dr. I. C. White, the State Geologist of West Virginia, that there was an abundance of iron ore in this territory, and I have before me a written statement of George H. Ashley, formerly of the United States Geological Survey, and now State Geologist of Tennessee, that there is an abundance of iron ore in the Cumberland Gap territory. Thus the Pocahontas coal coming down grade to Bluefield, and the limestone and iron ore coming up from the south, naturally meet and fuse at Bluefield, which promises to be the industrial capital of that section."



A Group of Manufacturing Plants.

Bluefield, West Virginia

There is a mountain of silica in Bluefield from which may be obtained a magnificent glass sand, and this may be quarried at the top of the mountain, and after being ground can be brought to the railroad level by gravity through a pipe line. Within the corporate limits of the city, too, are great leads of yellow ochre, known to be over fifty feet in depth. It has tested out as high-grade, and has been passed upon as being especially adapted for the manufacture of linoleums and high-grade paints. Not far distant from Bluefield is a mountain of onyx of various colors and surpassing beauty. Within the city proper there is likewise a wide ledge of red and variegated marble which quarries readily in immense blocks; there are also, within the city limits, outcroppings of brown hematite iron ore, and fossil iron ore, and a deposit of nickel as well. Just how extensive are the ledges of these last mentioned minerals has not as yet been determined. Bluefield possesses several mineral springs of high medicinal values. There is a white sulphur spring, a yellow sulphur spring, and a chalybeate spring, all of considerable volume and all thoroughly impregnated with mineral properties. Taken by and through the hills which surround the "Gate City," on all sides are underlaid with a mineral wealth of an amazing variety and of a value which, if realized upon, would rival the wealth of the storied Aztecs.

CHEAP FUEL

Being in the heart of a coal-field most richly endowed by nature, Bluefield possesses that for which so many cities strive—cheap fuel. Expensive fuel necessarily retards the growth of cities, while in every recorded instance, where cheap fuel is obtainable, cities have sprung up and grown to large proportions, their growth being directly attributable to the cheapness with which fuel may be obtained. With coal mines at her door, giving forth millions of tons of the very highest grade bituminous coal per annum, Bluefield has coal for her manufactories and for domestic purposes, at a cost of slightly more per ton than the drayage of coal costs in cities remote from the producing centers. This means much to the manufacturer already established in Bluefield, it means much to the manufacturer in less favored sections seeking better conditions—it means cheaper cost of production and an increased power of meeting and overcoming competition.

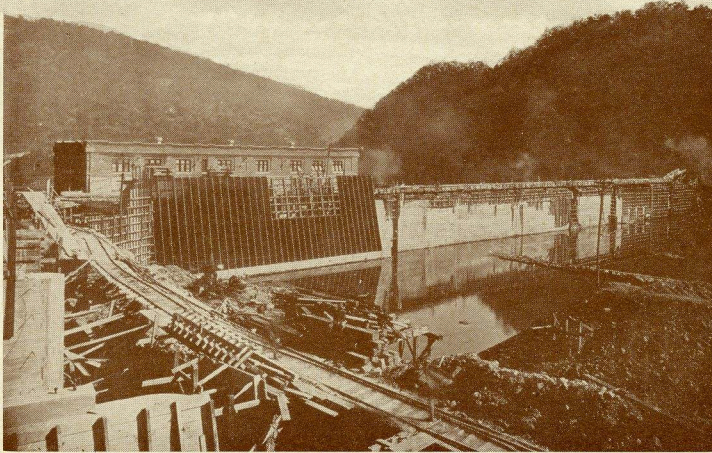
Bluefield, West Virginia

HYDRO-ELECTRIC POWER

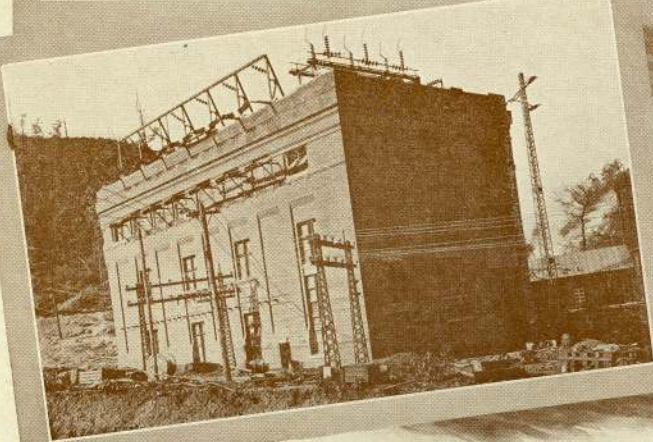
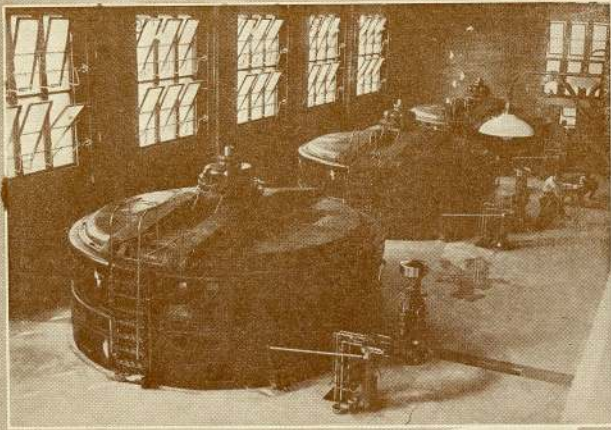
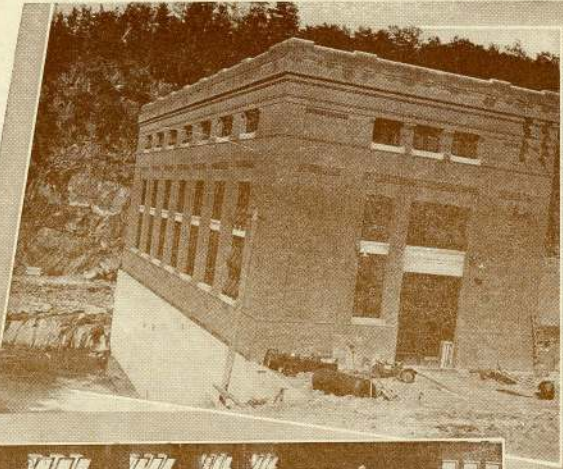
Bluefield is enabled to offer to the manufacturer and power user hydro-electric power at any required voltage, and at reasonable rates.

The Appalachian Power Company chartered and organized under the laws of Virginia, and managed by H. M. Byllesby & Company, has its general offices in Bluefield, and is domiciled in a handsome new office building devoted entirely to its uses. The Appalachian Power Company owns five separate power sites on New River, near Pulaski, Virginia, aggregating a total fall of 275 feet, or a total of 75,000 horse power. Two of these sites, numbers 2 and 4, have been completed, and together give a total of 29,000 horse power; work on the other three sites will be pushed forward rapidly to an early completion. The power from the sites already completed is being brought into Bluefield, over high-tension transmission lines, and these lines have been extended beyond Bluefield into the coal-fields, and many operations in the Pocahontas field are now being supplied with hydro-electric power.

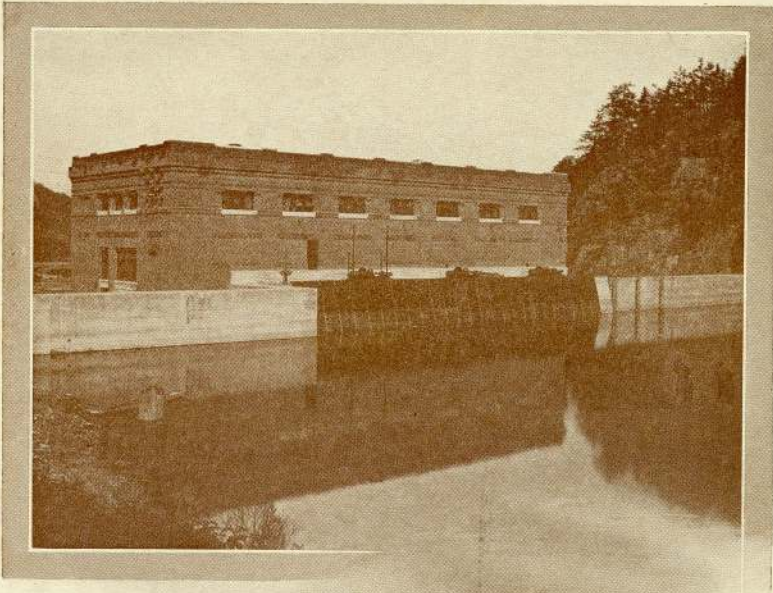
Sub-stations have been constructed at Bluefield, and at Switchback, and Coalwood in the coal-fields, and through these sub-stations the current brought in over the high-tension lines is stepped down to a suitable voltage for distribution.



Appalachian Power Company's Power House and Dam, at Development No. 2, in process of construction.



Appalachian Power Company's Power House, Development No. 4;
Electric Generators in Power House, Development No. 4; Step-up
Transformer House.

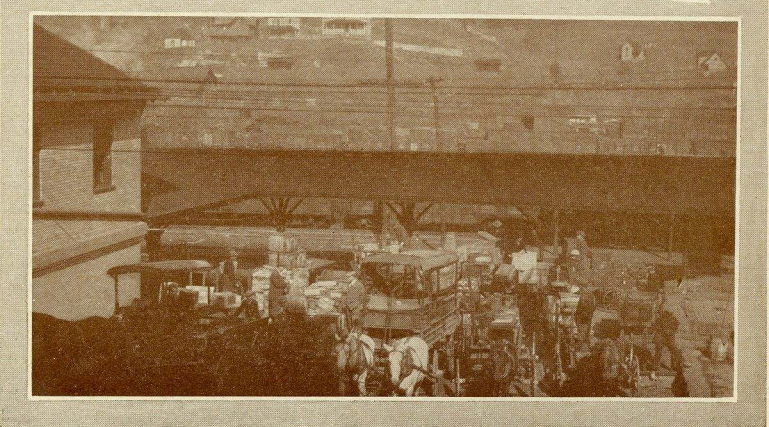
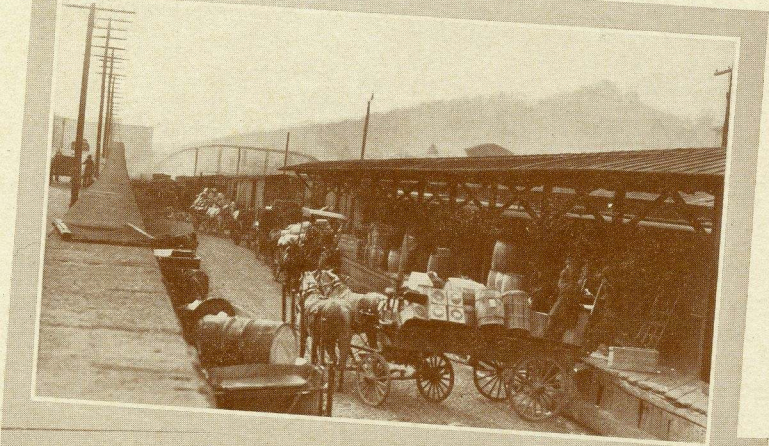


Appalachian Power Company's Power House and portion of Dam at commencement of operation, Development No. 4.

The cheapness of the Appalachian Power Company's hydroelectric power in Bluefield, and the contiguous territory, is not only increasing the output of the coal-fields, but is stimulating the growth of industries of all classes, in and near Bluefield. The Appalachian Power Company has a standard published scale of rates, and their guarantees insure to the investor and manufacturer a safe and economical power.

The Company is now constructing a second transmission line to this section, from their dams on New River, and will thereby be enabled to furnish additional power to meet the great demands therefor that the increasing developments require.

The management of the Appalachian Power Company, recognizing that the vast territory served by this power abounds in raw material; that it is centrally located, with a low freight rate, and enjoys cheap power, good labor and climatic conditions, has organized and equipped the first Industrial Department ever organized by any power company. This department under the direction of an experienced man, assisted by competent engineering, construction and power departments, offers to furnish, upon application, rates, estimates and such information as is essential, to prospective investors, manufacturers or industrial representatives who are seeking a location in this field, and will assist in securing for them a location that will prove economical and satisfactory.



Bluefield has Superb Facilities for handling her ever-increasing Passenger, Freight, and Express Business.

Bluefield, West Virginia

SHIPPING FACILITIES

Bluefield enjoys exceptional transportation advantages. Being the terminus of three divisions of the Norfolk and Western Railway, it is a pivotal point for shipments billed east or west, north or south. Fast through freight schedules are maintained over all these divisions, insuring quick service to and from the populous centers, of the East and Middle West, and the manufacturer or jobber located in Bluefield is in daily close touch with his customers. Freight rates have been equitably adjusted. There is no discrimination by the railroad against Bluefield, and goods shipped from or to Bluefield are handled by the railway company with the utmost celerity and at a reasonable charge.

Bluefield, likewise, has excellent passenger train service to the outside world, and while only a night's run from Cincinnati or Columbus, or from Washington, Richmond or Norfolk, it is slightly more than that to New York or to Chicago.

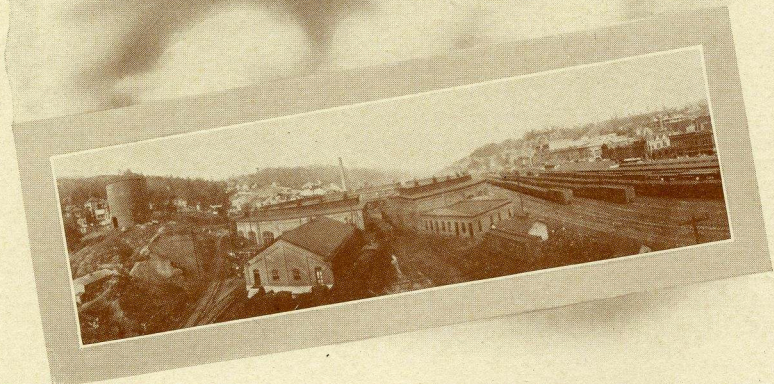
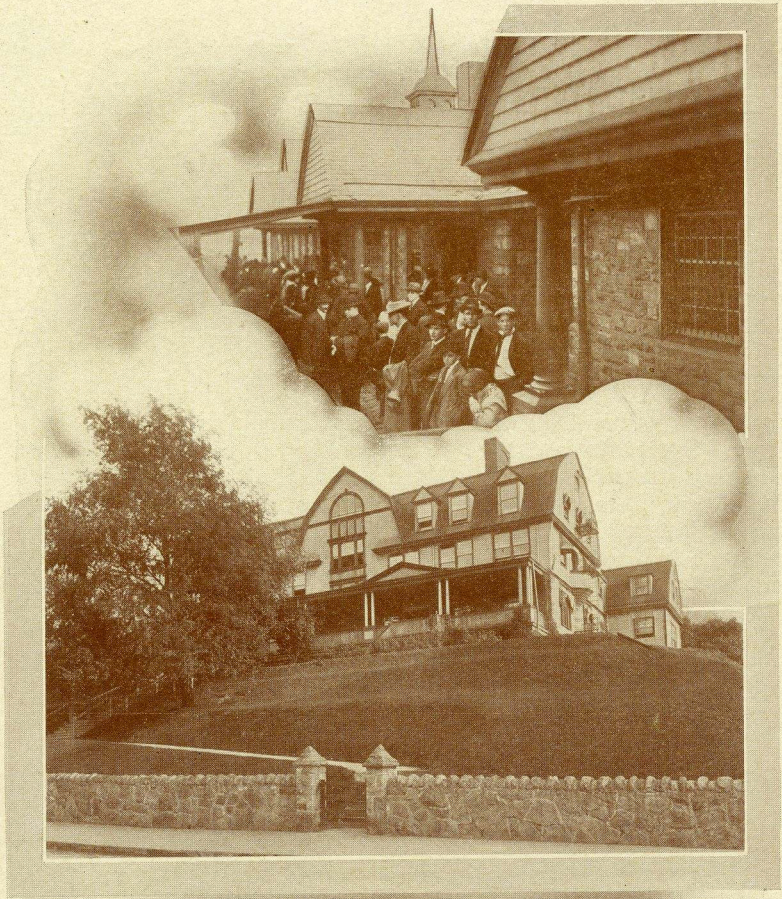
Distances from large cities to Bluefield are shown below:

	Miles	Hours
Roanoke	103	3
Lynchburg	157	5
Richmond	305	10
Norfolk	360	12
Washington	330	10
Baltimore	370	11
Philadelphia	465	14
New York	519	16
Cincinnati	327	11
Columbus	319	11

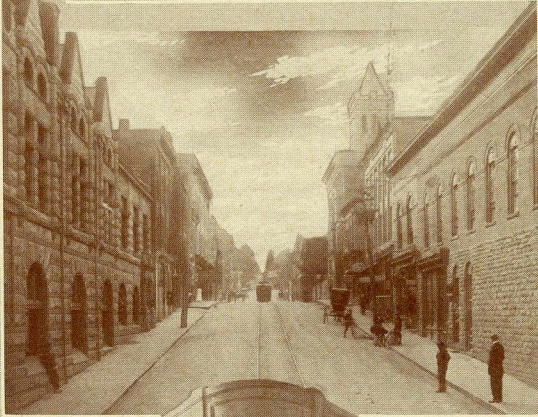
ELECTRIC CARS

Bluefield's street car system, controlled and operated by the Appalachian Power Company, is electrified, and is up-to-date, with frequent service between the business sections and suburban residences. There is also maintained a 20-minute service between Bluefield and Graham, Virginia.

An electric road is projected through the coal-fields, and to Princeton, the county seat, 12 miles distant, and rights of ways have been surveyed for an extension of the electric lines converging at Bluefield to Tazewell, Virginia, and through the rich coal-field section to Welch, distant from Bluefield 50 miles.



Norfolk & Western Depot—showing a train load of passengers awaiting the street cars—Office Building and Yards.

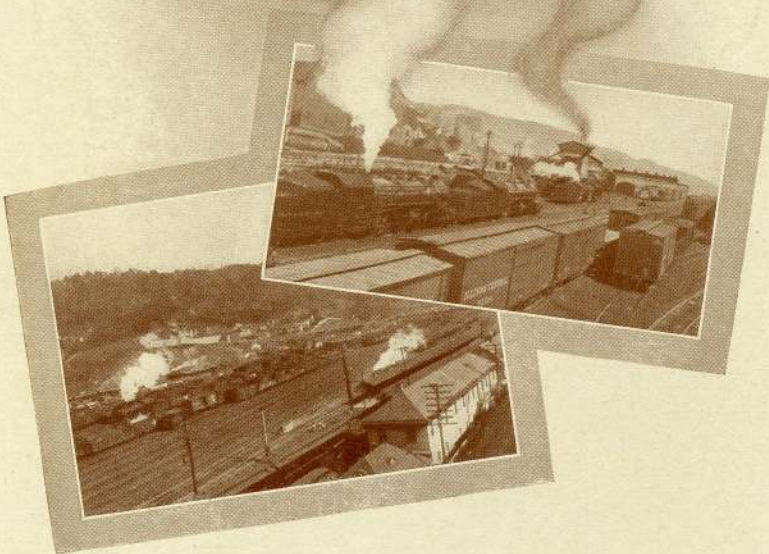


In the Downtown District.



Y. M. C. A.

Bluefield is proud of the distinction of having the finest Y. M. C. A. building in the State, which provides a home for the man away from home; for the 500 local members, and for members of any association. Along educational lines, practical talks and reading-rooms are provided, together with a library, billiard and pool rooms, as well as baths and well lighted and ventilated rooms with good beds, are to be found in the building, and warm meals at any time of day or night are always to be had.



Busy Railroad Yards and Y. M. C. A. Building in which the workers recreate.

Bluefield, West Virginia

MERCANTILE HOUSES

As a jobbing city, Bluefield takes first rank. It is the logical jobbing center of the coal-fields, and through its mercantile houses supplies the wants of more than half a million people. Her immense mercantile establishments are one of Bluefield's proudest boasts, and in themselves form a bulwark of strength for the future, indicating, as nothing else could, on how firm a foundation is the city builded. In Bluefield are four wholesale grocery houses whose annual trade will approximate two millions of dollars; a wholesale dry goods and notion house enjoying a business of a quarter of a million annually; a machinery and supply house, and a hardware establishment, which measure their annual sales by approximately one and one-half million dollars; a carriage and farmers' supply house, doing a splendid business; four produce and fruit jobbers, whose establishments have grown to large proportions; two large and a number of smaller lumber and supply



In the Wholesale District.



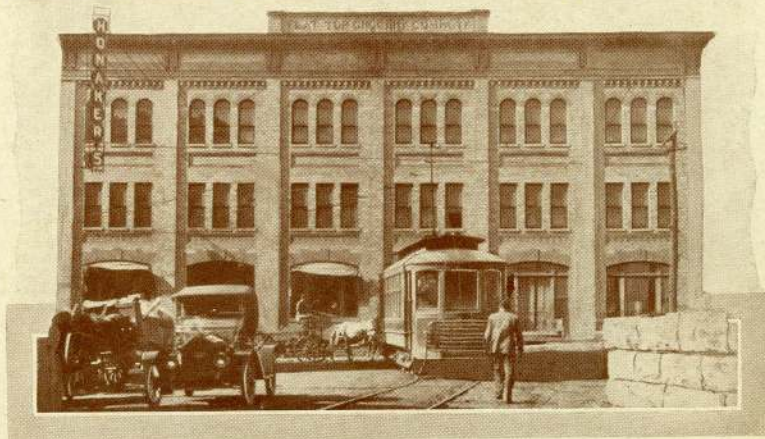
Bluefield's Department Stores cater to a discriminating public.

Bluefield, West Virginia

houses, whose yearly shipments reach beyond the million-dollar mark; three distributing provision houses representing the leading Chicago meat packers; one jobbing house of musical instruments and musical supplies, and a furniture house second to none in the country.

RETAIL HOUSES

Bluefield, with its over a hundred retail stores, does the largest business of any city of its size in the country. Every kind of goods required by the city's trade is offered for sale. The merchants are aggressive and progressive and are prompt in their efforts to present the latest styles and novelties of every kind. Bluefield attracts a volume of business from a fifty-mile radius that embraces a population of considerably over 200,000 prosperous people. The retail business in Bluefield has more than doubled in the last five years. In Bluefield is located one of the largest furniture stores south of the Ohio, and east of the Mississippi River; the store proper having a floor space of 49,000 square feet. Three drug stores are fitted throughout with the most modern and expensive fixtures, and two jewelry stores would be credits to Upper Broadway. Most of the clothing stores are equipped with the latest devices for displaying and the proper handling of their goods, and many of the grocery stores are at all times pleasingly decorated with the many delicacies for the table. Being only a night's run from Norfolk, sea-food is brought to Bluefield and served as fresh as in any seacoast city.



A Wholesale Grocery.



Elegant Hotels welcome "The stranger within the gates."

Bluefield, West Virginia

HOTELS

Bluefield is up to date in hotel accommodations. The Hotel Matz, which cost \$250,000, is absolutely fire-proof, has a large lobby, seven dining-rooms, a banquet hall, a dance hall, a roof-garden, and one hundred and fifty bedrooms. It is equipped and furnished throughout with every modern convenience. The New Altamont Hotel, recently reconstructed and refurnished, has a large lobby, a spacious dining-room, and forty-four bedrooms. The Grand Hotel is up to date, with all modern conveniences and elegantly furnished. There are numerous smaller hotels and boarding houses in the city, and plans are being considered as this book goes to press for a hotel to be constructed on a scale of magnificence equal to those found in any city in the country. Bluefield's commercial importance is such that she entertains many visitors, and while already splendidly equipped for entertaining them, the demand for high-class accommodations is increasing, and provisions for meeting this demand will be made.

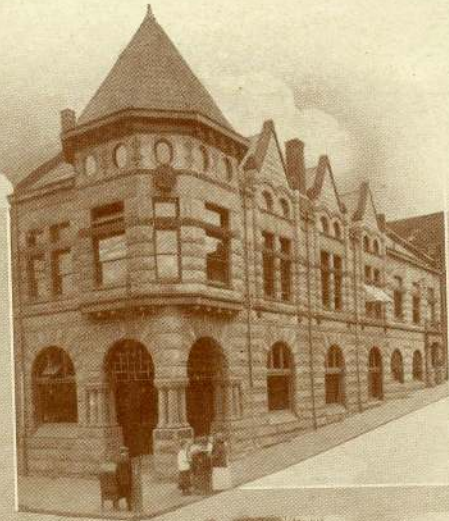
PAVED STREETS

All of Bluefield's business streets are paved with vitrified brick, substantially constructed on concrete foundation. In addition to the main streets, this paving was planned to take care of the three principal approaches to the city; i. e., from Princeton, the county seat, on the east, Graham, Virginia, on the west, and Bland County on the south. These three thoroughfares are, likewise, now paved with vitrified brick and extended with macadam. Where the residence sections are reached the streets are parked with grass plots and trees on each side of the driveways, and are paved with tarvia.

Modern cement sidewalks have been constructed in all parts of the city, all brick sidewalks being replaced with cement, so that all the central part of the city is provided with this dry and easily cleaned walkway. The streets are cleaned regularly by the city forces, using sprinkling wagons and machine and hand sweepers.

DRAINAGE

Bluefield's drainage system has been installed on the pipe plan, all surface drainage carrying storm water, etc., being let into large pipes under the streets and carried off quickly; all house drainage being conducted into small pipes, where there is always plenty of water to carry away the sewage. These pipes lead to septic tanks, or sewage disposal plants, where the sewage is dissolved and filtered and the effluent carried off in the nearby stream.



Her Banks are a veritable bulwark of strength.

Bluefield, West Virginia

BANKS

Perhaps there is no one thing that indicates the growth and development of a community more than a comparative statement of its banking institutions. Bluefield has just cause to feel proud of her banks, which have made a steady and satisfactory growth, as shown by the following summary of the four banks doing business here, two of which began business less than five years ago:

	Capital, Surplus and Profits	Individual Deposits	Resources
Oct. 1st, 1912	\$771,159.96	\$2,474,346.13	\$3,560,509.09
Oct. 1st, 1911	714,000.00	2,050,000.00	3,123,000.00
Oct. 1st, 1910	677,000.00	1,623,000.00	2,605,000.00

CITY GOVERNMENT

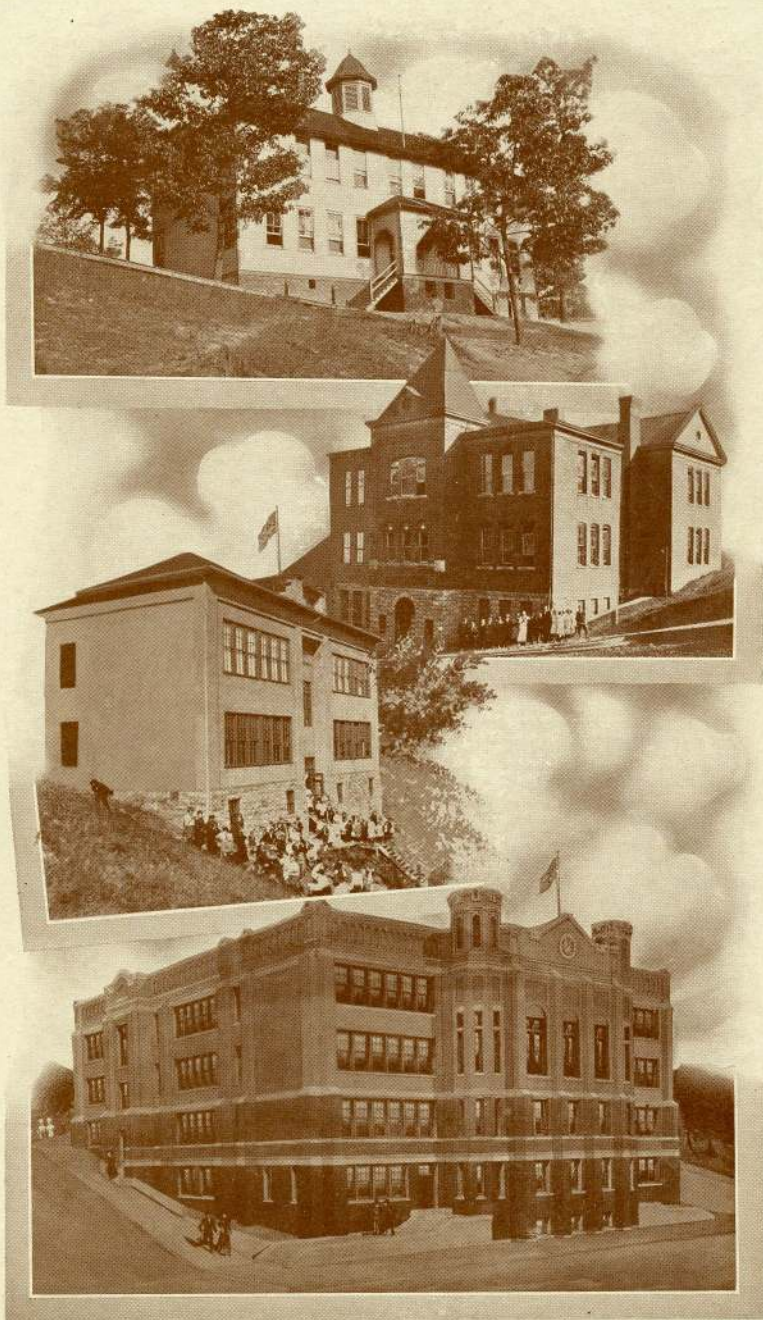
Government by commission is the manner in which the city's business is conducted. The city's affairs are vested in four commissioners elected equally from the two political parties casting the highest number of votes in the city at the last preceding national election. The four commissioners transact the business subject to the veto power of a bi-partisan body of thirty-six councilmen from the nine wards of the city. The police and fire departments are organized and selected by civil service, and the selection of city officials is so arranged as to divide the government of the city equally between the two dominant political parties.

FIRE DEPARTMENT

With modern and well equipped central and suburban fire stations; fast and well trained fire teams, one of which is the fastest in the State; high water pressure of 120 pounds to the square inch; the Gamewell Fire Alarm Telegraph System, and the efficient men of the department, the citizens of Bluefield are reasonably secure from extensive and damaging conflagrations.

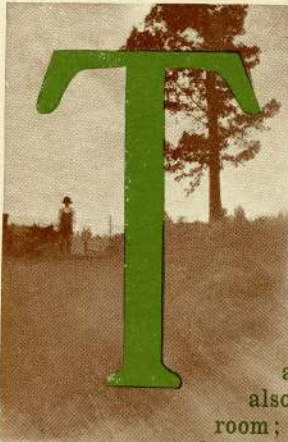
WATER

The water supply of Bluefield is furnished from never-failing mountain springs and is practically inexhaustible. Large steel reservoirs with concrete foundations are used for storage purposes, and all danger of contamination has been eliminated.



A Group of School Buildings.

Bluefield, West Virginia



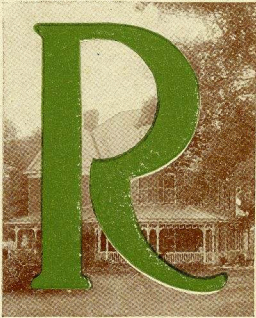
THE City of Bluefield has good schools, presided over by capable educators, and directed by a most efficient school board, who are ever alert to the welfare of the children whose education is entrusted to them. The new High School building, which cost over \$130,000, ranks as one of the five best modern school buildings for the money expended to be found in the United States. In addition to class rooms, it contains a large auditorium, capable of seating twelve hundred pupils, equipped with a large and conveniently arranged stage; there is also a large, well lighted library and reading-room; offices for the Board of Education and administration officials; a magnificent gymnasium with running track, shower baths and locker rooms attached; a large store room; a rest room for sick and nervous pupils, with private toilet; principal's office; domestic science rooms; chemical, physical, and biological laboratories; a study hall sufficient to accommodate 200 pupils; an electric program clock; a telephone system; and a heating system combining the merits of direct steam heating with fan ventilation. This magnificent building is not only occupied by the High School, but by several of the grades as well. There are several handsome buildings devoted exclusively to the grade schools, located in various sections of the city, and another has just been contracted for.

Bluefield now employs fifty-six teachers; thirty-nine of these are employed in the grades, and seven in the High School. Music and drawing are taught by special teachers, and a skilled supervisor is in charge of the primary grades. The enrollment is above the 2,000 mark. Every effort possible is being put forth to make the course of study practical. The teaching force is as strong as that of any school of secondary grade in the State. Each department is in charge of a teacher especially trained for the work of that department, and all hold degrees from reputable institutions. Thoroughly equipped laboratories are in use for all scientific subjects. The grade teachers hold Normal School diplomas or the equivalent, and are selected from a wide range of territory for especial fitness for the particular grade taught. At Athens, only eighteen miles distant from Bluefield, is located the State Normal Institute, housed in new, modern fire-proof buildings, and here the teachers of the State are perfected in their profession.



Handsome Residences Abound.

Bluefield, West Virginia



RESIDENCES—Bluefield takes much pride in its residential sections. Its hills are dotted with many beautiful homes, and well-kept lawns, and many handsome residential additions have been added recently to the city proper. Built originally along the railroad level, Bluefield's homes of the finer sort were few and far between, but as the city expanded the residential sections were provided for with more harmonious surroundings and handsome,

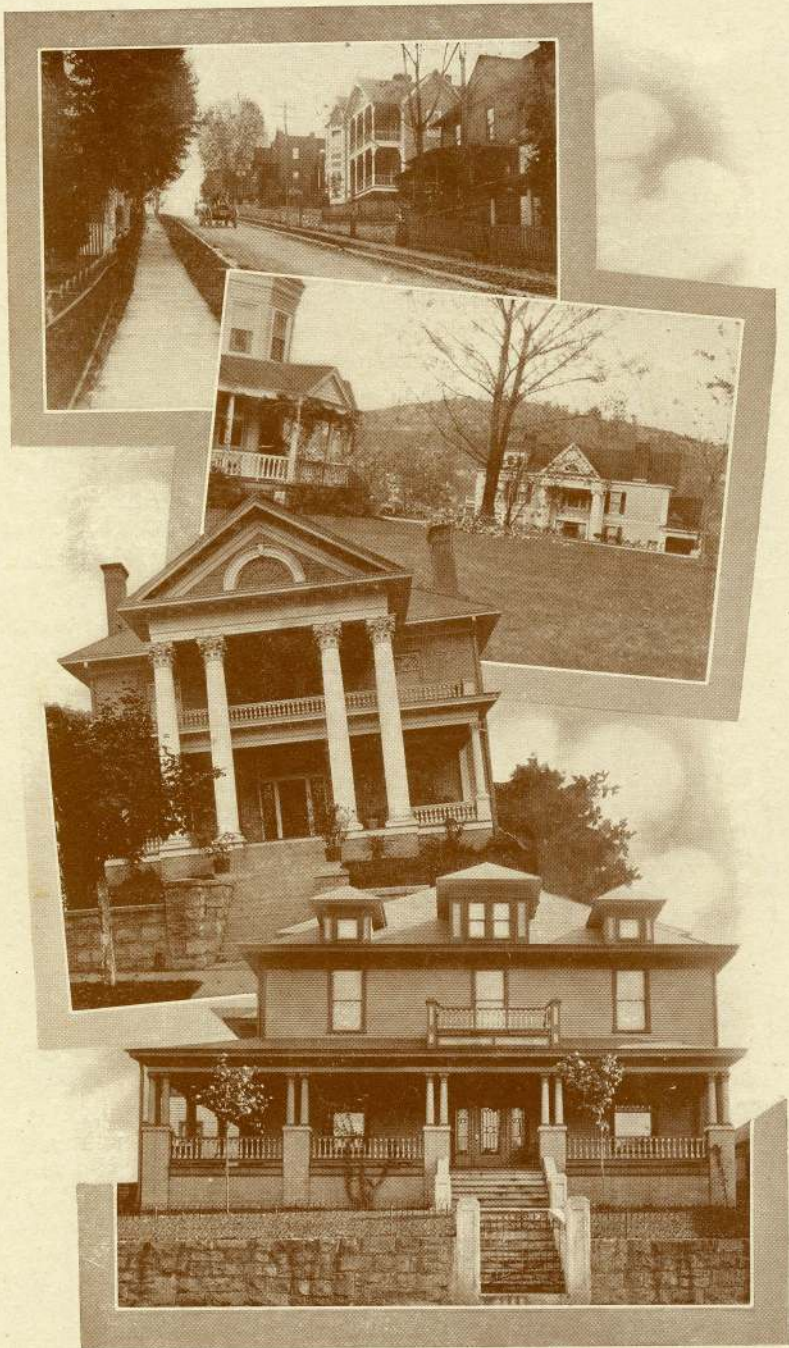
spacious, and, in some instances, palatial homes were erected.

Apartment houses are in demand in Bluefield. For some reason the city was slow to awaken to the necessity for these modern homes, but a very handsome apartment house is now in course of construction on the crest of one of the city's hills, and others are projected.

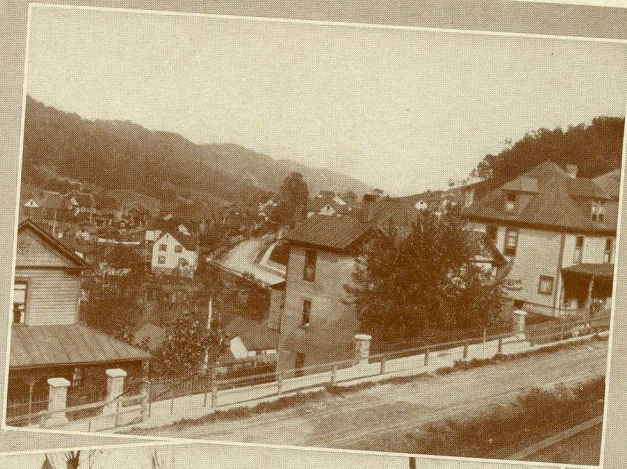
Bluefield has likewise been without a social club to adequately entertain its visitors, and to furnish a place of resort for its own citizens. The need for a club has been recognized for some time, and has focused into a certainty now. A fund of \$50,000 has been raised for the construction of a first-class club house built along modern and artistic lines, and the work of the building committee will be rushed to an early completion.

CLIMATE

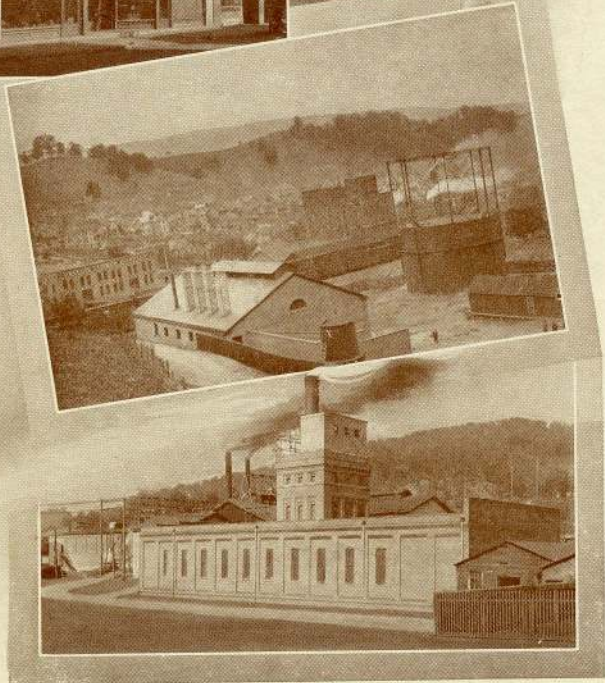
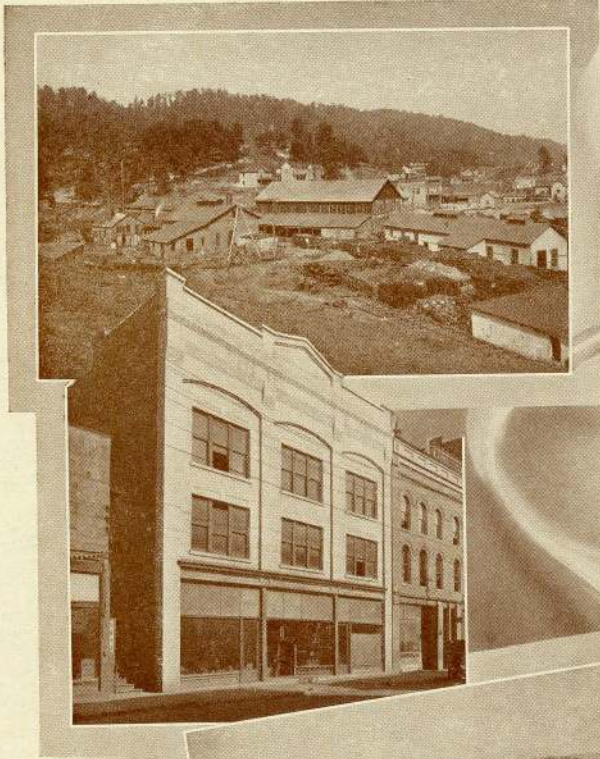
Bluefield is located in the mountains, 2,559 feet above sea-level. All things considered, the climate is unequaled by any other city east of the Rocky Mountains. The summers are delightful. With the pure air and mountain breezes, hot weather is unknown. The winters are somewhat colder than in cities of lower elevation in Virginia and West Virginia, but the air being much drier, the cold is not so penetrating nor so disagreeable. The intense cold and blizzards of the North and Middle West are unknown here. For a pleasant summer vacation or permanent residence, the climate of Bluefield and surrounding country offers every attraction, and a resort hotel on the hillside, near one of the mineral springs which abound in the city, is in contemplation.



Bluefield's wealth manifests itself in Handsome Residences.



Homes top the hills to receive the first kiss of the morning sun.
[29]



Industrial Plant, Power Plant, Gas Plant, and a Distributing Warehouse
for mine supplies.

Bluefield, West Virginia

TRADE UNIONS

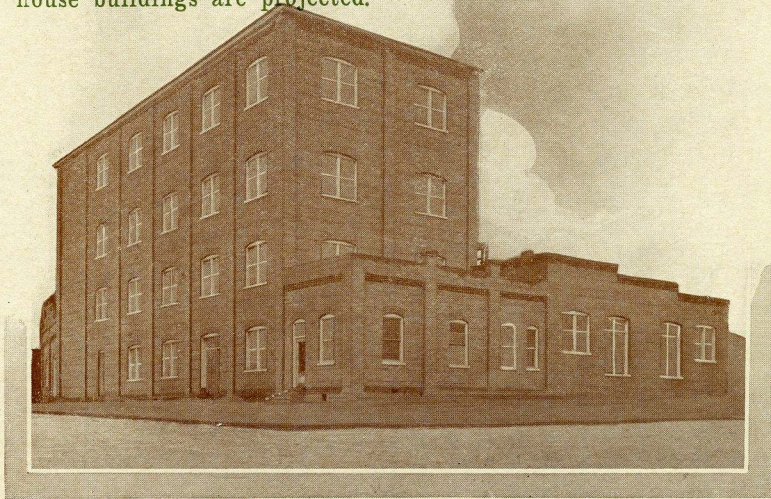
The following trade organizations have lodges in Bluefield: United Commercial Travelers, Brotherhood of Locomotive Engineers, Brotherhood of Locomotive Firemen, Order of Railway Conductors, Carpenters and Joiners of America, International Association of Machinists, Brotherhood of Boilermakers, Iron Ship Builders and Helpers, and Typographical Union.

GAS

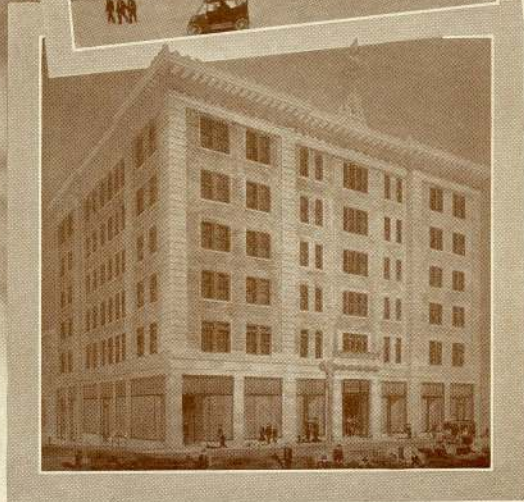
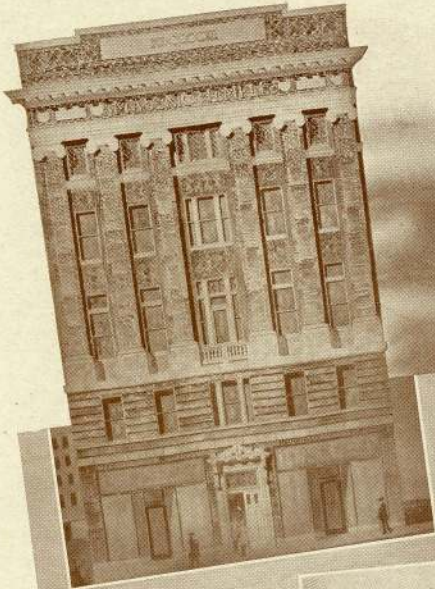
There has recently been erected in Bluefield a gas plant, built along the most modern lines, which manufactures gas in large quantities, and furnishes this very essential power and lighting commodity to the consumer, be he householder, or manufacturer, at a reasonable cost. Large retorts or containers for the storage of gas have been placed in juxtaposition to the plant; the entire city has been piped and the company is dealing with its patrons on a very liberal plan. Cheap gas is always in demand, and Bluefield is enabled, by virtue of this up-to-date plant, to fill that demand in any desired quantities.

BUILDINGS

In addition to the Federal Building, Y. M. C. A. and church buildings, the city boasts of a number of handsome business, bank and office buildings, a seven-story office building having been recently completed, putting Bluefield far ahead of cities of like size in this respect. A magnificent new Masonic temple building is now in course of construction, and several modern apartment house buildings are projected.



An Old Established and Flourishing Flour Mill.



Modern Fire-proof Buildings—Masonic Temple, Federal Building, and Law and Commerce Building.



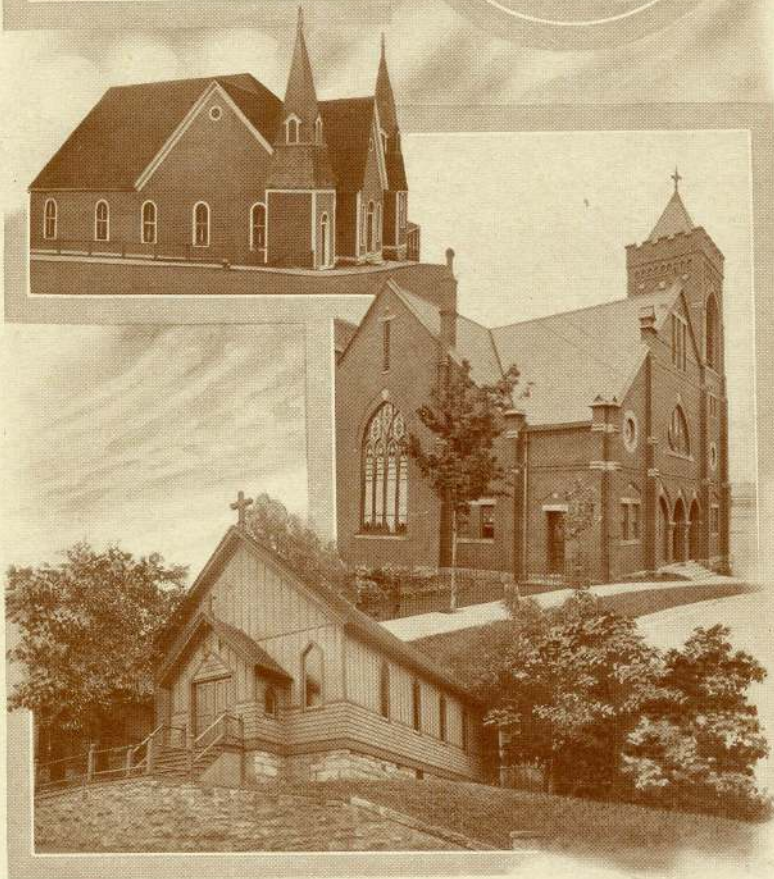
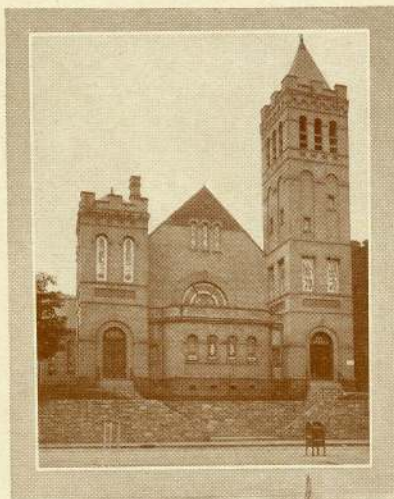
Characteristic Buildings.

AMUSEMENTS

Bluefield's fine \$100,000 Opera House, built and operated by the local Elks' Lodge, is thoroughly up to date, and during the season plays some of the biggest and best road attractions. The house enjoys a large patronage, as do also the three modern and well equipped picture theaters. A country club is a project which promises to materialize in the very immediate future, but in the meantime attractive golf links and tennis courts afford invigorating exercise and amusement to the devotees of these games. The links are well located in the suburbs, and two excellently kept tennis courts are located in the very heart of the city.

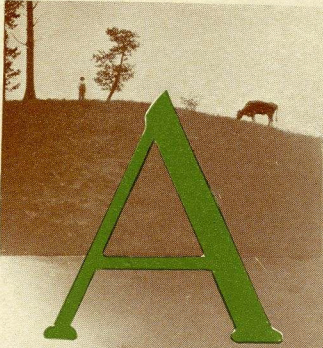
POST-OFFICE RECEIPTS AND GROWTH

The Bluefield post-office was established in September, 1887, and the first month's income was \$12.05. For the quarter ending March 31, 1890, the income was \$286.14. For the quarter ending March 31, 1897, it was \$2,479.04, an increase in ten years of 20,000 per cent. For the year ending March 31, 1907, it was \$32,042.98, an increase many times greater than the first ten years. For the year ending March 31, 1911, it was over \$49,000, the office being then advanced to the first-class. The office occupies the first floor of the new Government building, costing, with its site, \$130,000. It is equipped with every appliance and facility the Government has adopted for expeditiously handling the mail and conducting the postal business. Other cities may have larger offices, but none are better equipped.



A religious community manifesting pride in its places of worship.

Bluefield, West Virginia



AGRICULTURAL AND GRAZING—

Bluefield could very correctly be named Bluegrassfield, as the ground within its corporate limits was, only about twenty years ago, covered with blue grass on which was grazed fine export cattle. No finer or heavier export cattle or sheep are grown in the United States than those grown annually within twenty miles of Bluefield. The country immediately surrounding Bluefield is adapted to the cultivation of grapes, apples, and peaches, a well as all

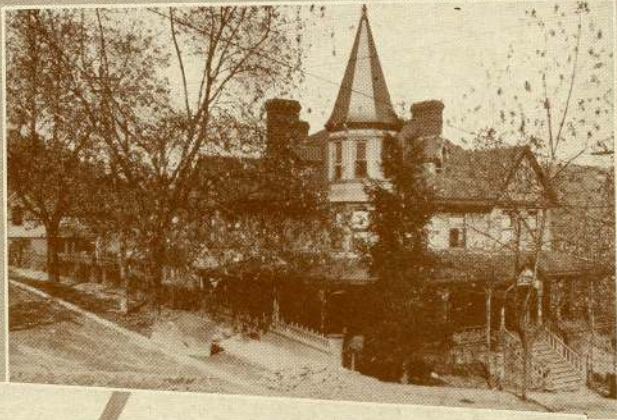
kinds of vegetables. There is no location which offers greater opportunities and advantages for the truck and dairy farmer. The climate and soil are conducive to large crops, and the demand for dairy products, vegetables and produce of every kind can not possibly be supplied from this section. Fruits, vegetables, poultry and produce of every description are daily shipped into Bluefield and the coal-fields, by express and freight from Eastern Virginia, North Carolina and Kentucky. The new interurban trolley line projected throughout the coal-fields and to Tazewell, Virginia, and Hinton, West Virginia, via Princeton, the county seat of Mercer County in which is situated Bluefield, will open up for truckers and cattle raisers a vast territory of this magnificent land hitherto regarded as unprofitable because of its inaccessibility. Good macadam roads, now being constructed, are being extended in all directions, and by virtue of these the outlying farm lands are being brought into closer touch with Bluefield.

CHURCHES

Bluefield is a religious community, and splendid edifices have been erected by the Presbyterians, Baptists, Calvary Baptists, Methodists, Metropolitan A. M. E., Episcopalians, Christians, Catholics, Hebrews, and Lutherans. Some of the church buildings are particularly ornate, and compare favorably with the best in the very large cities.

FRATERNAL SOCIETIES

Among the more conspicuous fraternal societies represented in Bluefield, are the Masons, Elks, Knights of Pythias, Odd Fellows, Woodmen of the World, Knights of Columbus, Red Men, and Eagles.



Bluefield's two Sanatoriums and a glimpse of the City's Healthful Location.



Motoring on good roads a supreme delight.

Bluefield, West Virginia

A SUMMARY

The foregoing facts, presented as concretely as may be, give a fair conception of the conditions which obtain in Bluefield; outline as in a sketch the opportunities which abound hereabouts, and yet, such are the limitations of a booklet, convey but a meager idea of the vastness of these opportunities—the richness of the possibilities. An endeavor has been made to show the bounteousness with which nature has bestowed her riches upon Bluefield. The raw material from which fortunes are carved is here. It needs but the magic wand of capital to convert it into the circulating medium which bears the Government stamp, and for every dollar planted by the enterprising ones in the hills of Bluefield it will yield forth returns in manifold multiples. To summarize in a paragraph, Bluefield's growth has been phenomenal; this growth is directly attributable to the wealth underlying the hills in and about the city, and yet the surface has hardly been scratched. Cheap fuel, cheap and reliable hydro-electric power, cheap and abundant gas for light and power, excellent railway facilities with short hauls to the populous centers, and a down-hill grade all the way; these are the conditions which Bluefield has to offer in addition to her treasure-house of natural resources, and these when combined, as is the case in Bluefield, with pure water, impossible of pollution, and excellent climatic, social, educational and living conditions, make Bluefield an ideal spot for the manufacturer, or producer, and for the laborer within his door.

CHAMBER OF COMMERCE

The Bluefield Chamber of Commerce, with its more than 550 members, is a live, progressive and aggressive body of business men, interested in their own businesses, and eager to assist in the upbuilding of Bluefield. They have grasped the opportunities which abound hereabouts, and through the medium of this booklet, which is dedicated to community prosperity, they pass the glad word abroad, and invite others to participate with them in building on the crest of the Alleghanies a large, metropolitan city. The Chamber is equipped to disseminate information concerning this territory, and solicits inquiries from those seeking new locations, or those who are interested from any standpoint.

For full particulars and details, with special regard to the proposition in which you are most interested, you are cordially invited to address

SECRETARY CHAMBER OF COMMERCE
BLUEFIELD, WEST VIRGINIA.

Bluefield, West Virginia

UNITED STATES CENSUS REPORTS:

OFFICIAL

1890	600
1900	4,644
1910	11,188

UNOFFICIAL

BUT PREDICATED UPON KNOWN FACTS, COUPLED WITH

INDOMITABLE SPIRIT:

1912	15,000
1920	50,000

PUBLISHED BY THE BLUEFIELD CHAMBER OF COMMERCE

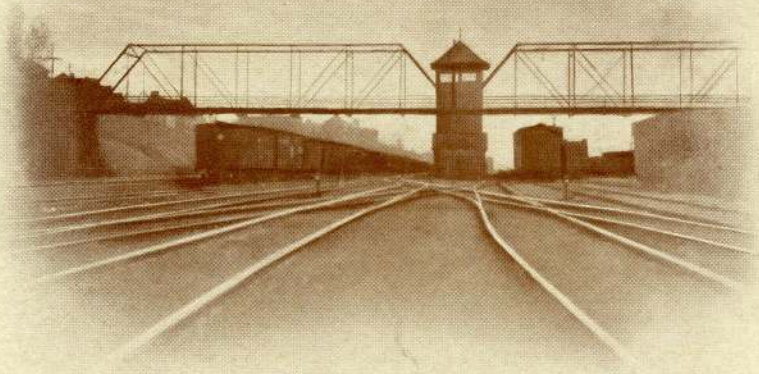
D. E. FRENCH, *President*
C. T. BOYKIN, *Secretary*

G. A. SHIREY, *Vice-President*
J. B. PEARSON, *Treasurer*

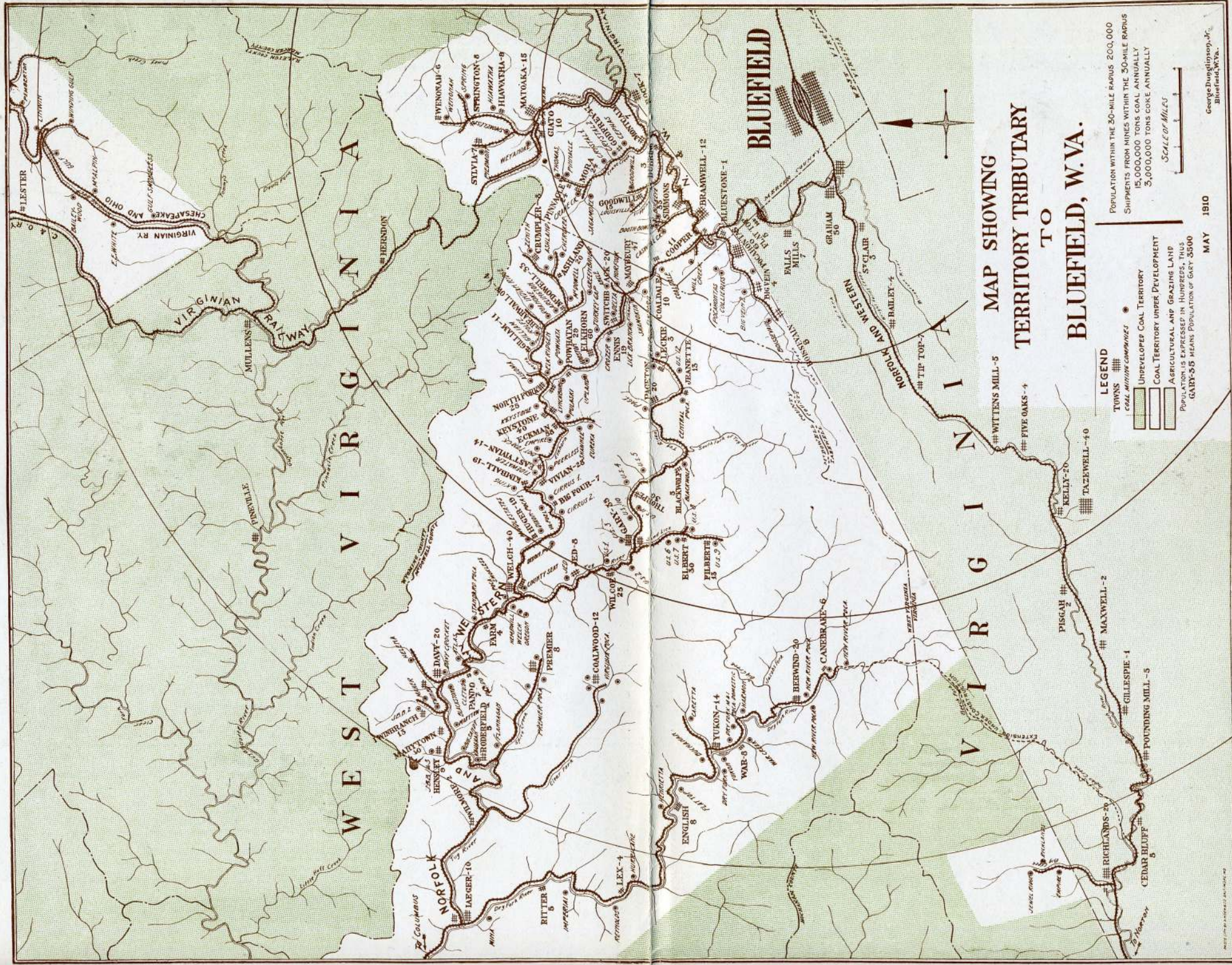
Directors: W. J. JENKS, W. H. THOMAS, J. W. RUFF, P. J. KELLEY,
H. W. FULLER, F. W. UDY.



A Committee of the Chamber of Commerce considering an engrossing matter.



J. P. BELL
COMPANY
INCORPORATED
Printers
Designers
& Engravers
Lynchburg, Va.
Established
1870



MAP SHOWING
TERRITORY TRIBUTARY
TO
BLUEFIELD, W. VA.

POPULATION WITHIN THE 30-MILE RADIUS 200,000
SHIPMENTS FROM MINES WITHIN THE 30-MILE RADIUS
15,000,000 TONS COAL ANNUALLY
3,000,000 TONS COKE ANNUALLY

LEGEND
TOWNS #
COAL MINING COMPANIES ●
UNDEVELOPED COAL TERRITORY
COAL TERRITORY UNDER DEVELOPMENT
AGRICULTURAL AND GRAZING LAND
POPULATION IS EXPRESSED IN HUNDREDS. THUS
6047-55 MEANS POPULATION OF 604,755

SCALE OF MILES

MAY 1910

George Dunphy, Jr.,
Bluefield, W. Va.

CURVED LINES INDICATE TERRITORY WITHIN 10, 20 AND 30 MILES OF BLUEFIELD, W. VA.



p 3222

Bluefield West Virginia

