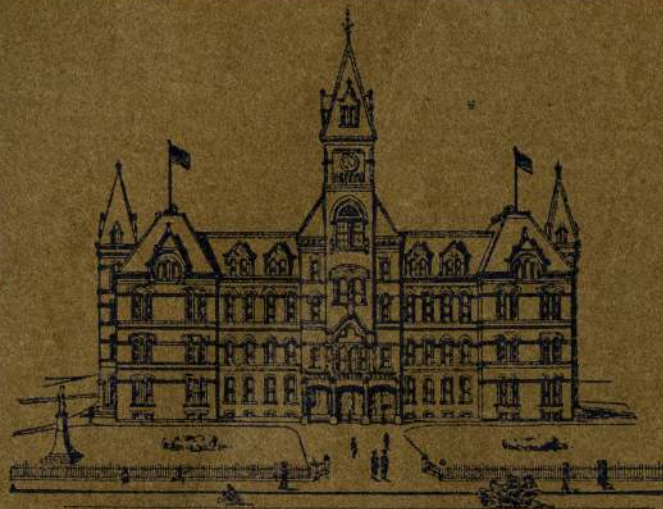


ILLUSTRATED CHARLESTON



CHARLESTON STATE CAPITOL

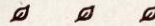
ILLUSTRATED CHARLESTON



GIVING VIEWS OF ITS
PUBLIC BUILDINGS AND
MAMMOTH INDUSTRIES



ISSUED BY THE CHAMBER OF COMMERCE, CHARLESTON, W. VA.



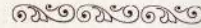
Officers

CHARLES CAPITO,	- - - - -	President
ADDISON M. SCOTT,	- - - - -	Vice-President
CHARLES LOEB,	- - - - -	Secretary
JOHN L. DICKINSON,	- - - - -	Treasurer

Board of Directors

E. A. BARNES	F. M. STAUNTON	GEO. F. COYLE
R. G. HUBBARD	W. C. KELLEY	CHARLES CAPITO
W. E. CONNELL	J. F. BROWN	C. K. PAYNE

CHARLESTON, W. VA.



THE growth of Charleston from a town of 12,000 people, according to the census returns for 1900, to a little city of 24,000 people, according to the census returns for 1910, is one of the indications of its enterprise during the past decade. Moreover, its growth has not been of the boom kind, but has been sure, steady and substantial.

It is hardly conceivable that a city with the natural advantages, to say nothing of the artificial advantages of Charleston, should not have made such progress, and should not continue to grow in almost the same ratio as it has grown for the past ten years. The Kanawha River, on which it is situated, is navigable the year around for a distance of about ninety miles, thirty miles above Charleston and sixty miles below, affording an outlet into the Ohio and on to the Gulf of Mexico.

As industrial feeders to this great waterway, are the great coal fields of the Kanawha and New Rivers and their tributaries, in the midst of which Charleston is situated, and of which it is the financial center.

Within the past few years there have also been opened up great oil and natural gas fields in the immediate vicinity of Charleston, which are in the initial states of development, and which pour a great part of their wealth into Charleston.

In addition to its natural transportation facilities already referred to, Charleston has four trunk lines of railroad—The Chesapeake and Ohio Railway, The Kanawha and Michigan Railway, which is a part of the Toledo and Ohio Central System, The Virginia Railway, and The Coal and Coke Railway, the latter of which has connections which afford trunk line facilities,

and also a fifth railway, The Kanawha and West Virginia Railway, which has its terminus in Charleston, and is now reaching for great undeveloped coal fields in the southern sections of the State.

Charleston is a very important jobbing point. It has nearly fifty jobbing houses, doing a yearly volume of business conservatively estimated at \$15,000,000.00. These jobbing houses cover nearly all the various kinds of the jobbing business.

Charleston is beginning also to be an important manufacturing center. The largest manufacturing institution here is the Kelley Axe Manufacturing Company, one of the largest of the kind in the world. There are also other industries, manufacturing extracts and dyes, glass, chemical fire engines, boilers and engines, electrical and mine supplies, lumber, paints, clothing, flour, etc. There are about thirty manufacturing institutions located in Charleston.

Charleston has ten banks, with a combined capital of about \$2,000,000.00, combined surplus and profit of about \$1,500,000.00, and combined deposits of about \$7,000,000.00.

Charleston has twenty-one miles of paved streets and twenty-three miles of public sewers. It has thirteen schools, thirty-four churches, a magnificent Y. M. C. A. building, three hospitals, and several asylums for homeless and destitute children.

The active industrial organization is the Charleston Chamber of Commerce, having the following officers: Charles Capito, President; Addison M. Scott, Vice-President; Charles Loeb, Secretary, and John L. Dickinson, Treasurer, and E. A. Barnes, R. G. Hubbard, F. M. Staunton, C. K. Payne, W. C. Kelly, J. F. Brown, George F. Coyle and Charles Capito constituting its Board of Directors.

Being the capital of the State, Charleston is also the center of political activity and the convention point for many civic and semi-public gatherings.

It is an up-to-date, compact, bustling little city, possessed of an unusual amount of personal wealth in proportion to its population, and aspires and promises to be one of the leading cities of the Middle South.

SOUTH CHARLESTON

SOUTH CHARLESTON, the principal industrial suburb, is connected with Charleston by the Kanawha Bridge and Terminal Company Bridge, built to accommodate the railroad, street car company and general traffic. This town is now two years old, and has a population of about one thousand. The promoters of this rapidly growing suburb have located the following factories: The Banner Window Glass Company, a co-operative glass factory capitalized at \$50,000.00, are employing from 100 to 150 men, turning out the best grade of glass manufactured.

Dunkirk Window Glass Company has a greater capacity than the Banner, representing an investment of about \$100,000.00, and employing about 200 men. It is one of the most modern and best equipped plants to be found anywhere.

The Kanawha Chemical Engine Company manufactures everything in the fire-fighting line, from the small chemical fire extinguisher for use in dwellings and stores, to the most costly city fire engines.

The Kanawha Land Company of Charleston, which controls South Charleston, is extremely liberal in its treatment of *manufacturing plants*. They have laid off and reserved the large acreage along the river front for the use of factories of all kinds, selling these sites at a very low rate and procuring cheap fuel. Situated as these sites are, on the Kanawha River and with railroad sidings connecting with all of the railroads, the shipping facilities are unexcelled.



West Virginia State Capitol



Capitol Annex



Court House



Y. M. C. A. Building



Charleston General Hospital



Kanawha Hotel



Charleston Postoffice



Alderson-Stephenson Building



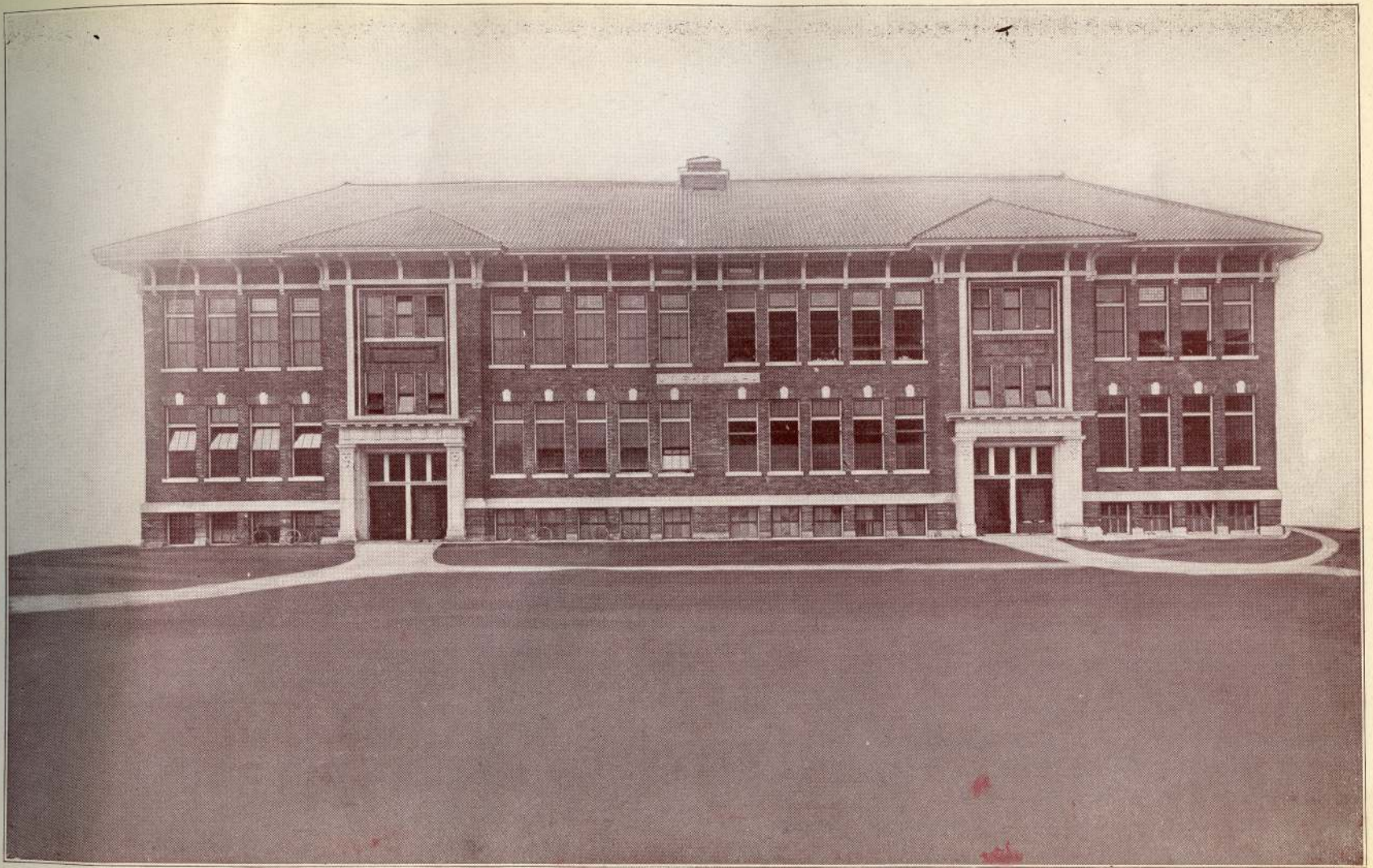
High School



Union School



Kanawha School



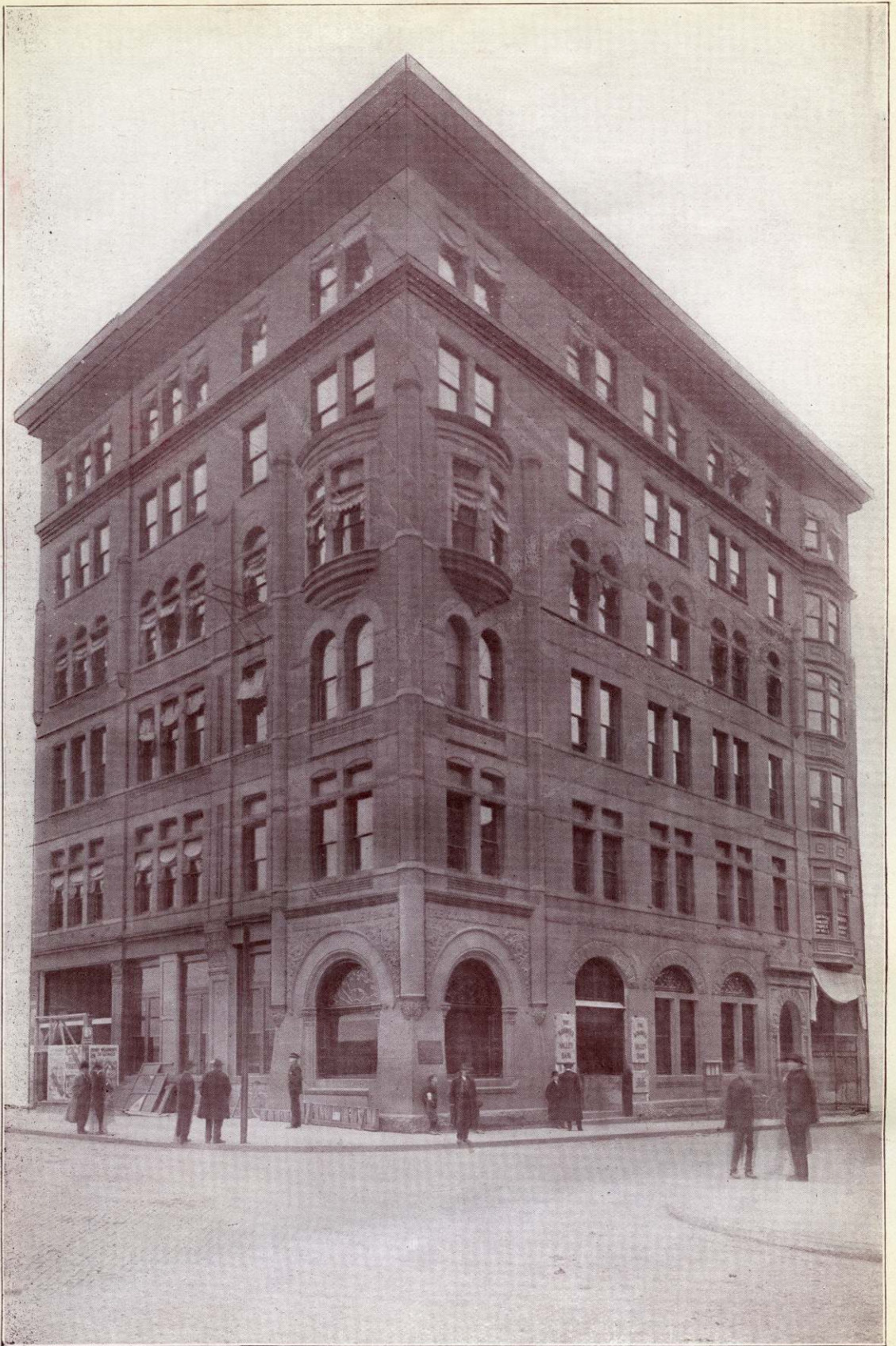
Tiskelwah School



Lincoln School Building



Mercer School



The Kanawha Valley Bank

Organized 1867.



Charleston National Bank



Citizens National Bank



National City Bank



The Kanawha National Bank

Special Attention to Collections. Foreign Exchange.

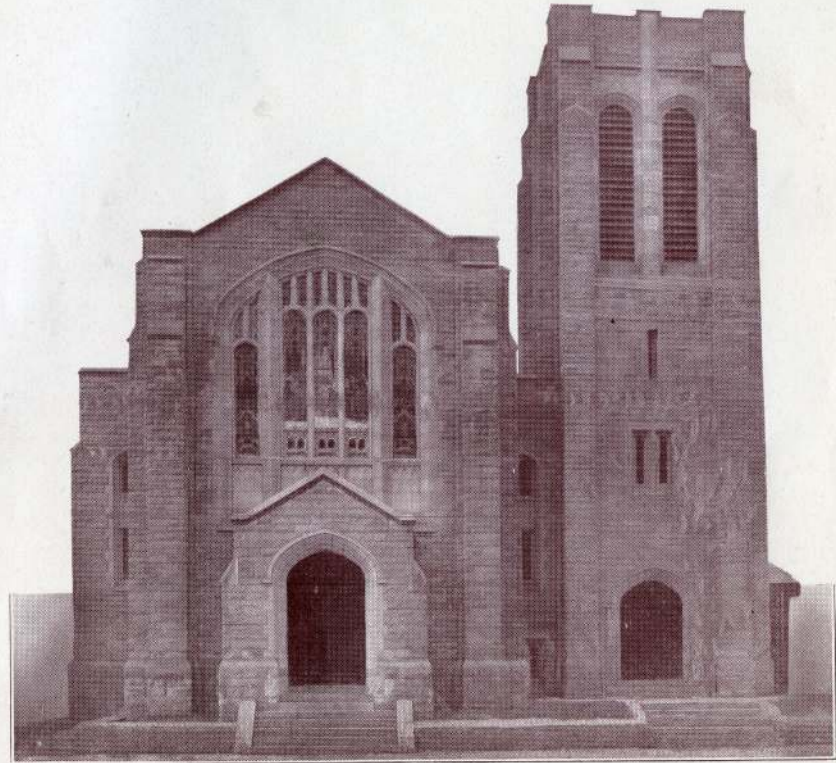
Safety Deposit Boxes for Rent.

3 Per Cent Paid on Savings Deposits.



Home of Kanawha Banking & Trust Co.
Charleston-Kanawha, W. Va.

Organized 1901. Capital, \$250,000.00. Surplus, \$200,000.00.
F. M. Staunton, President; Geo. E. Price, Vice-President;
H. B. Lewis, Cashier; Geo. E. Sutherland, Assistant Cashier.
DIRECTORS—H. G. Davis, Geo. E. Price, H. S. Johnson, D. G.
Courtney, Harrison B. Smith, Wm. M. O. Dawson, Peter
Carroll, H. B. Lewis, F. M. Staunton.



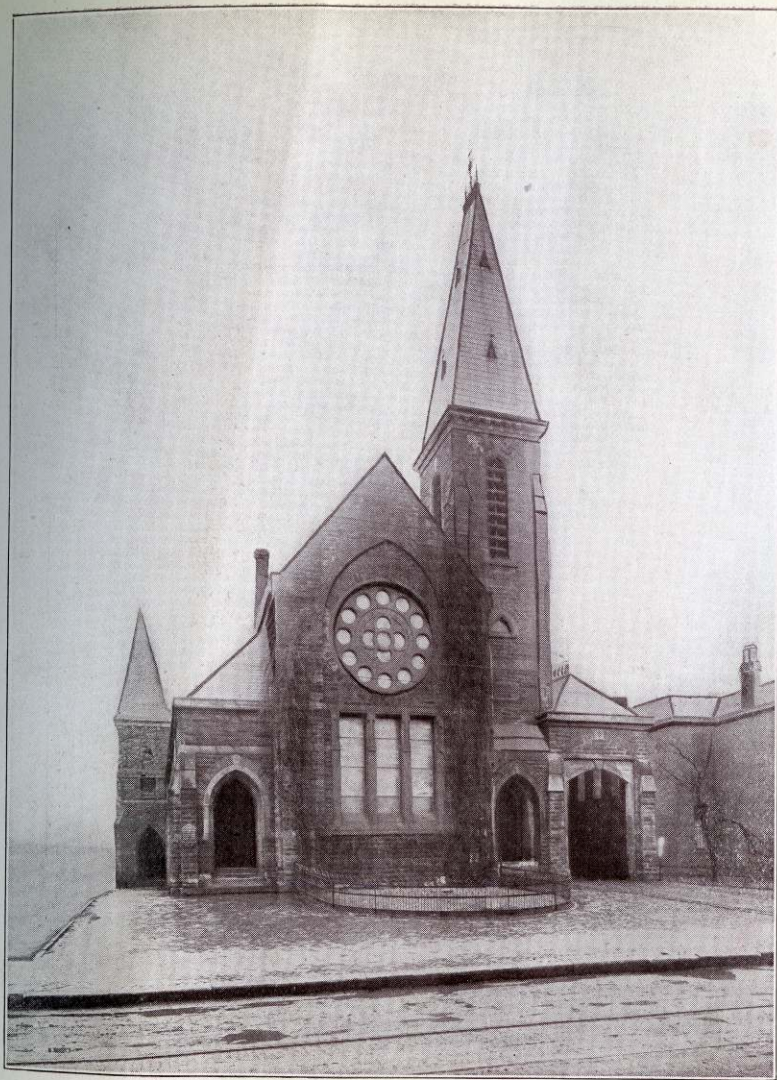
Bream Memorial Church



Baptist Temple



Catholic Church



Northern Presbyterian Church



Episcopal Church



Southern Presbyterian Church



Northern Methodist Church



Payne Shoe Company

CHAS. K. PAYNE, Prest. HENRY E. PAYNE, Vice-Pres. CHAS. F. ARMITAGE, Sec. and Treas.

Organized 1889. Incorporated 1903. Largest Wholesale Shoe House in the State. Sole Distributors of "Skreemer," "Hand-Over," "Witch-Elk" and "Skuffer" Shoes.



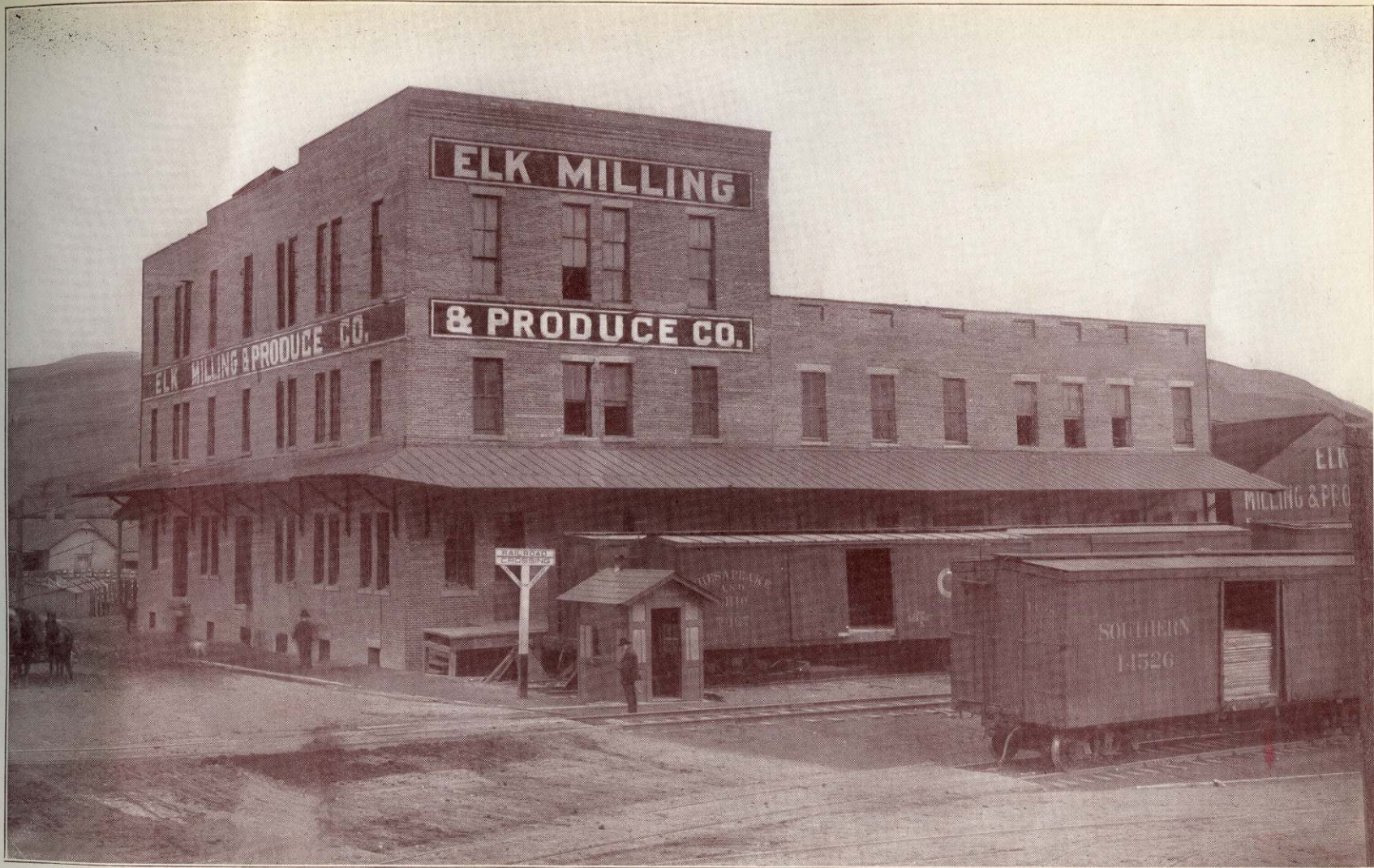
Oil Well Supply Company



Capital City Supply Company
Mine, Mill and Factory Supplies.



Charleston Milling and Produce Company
Merchant Millers. Wholesale Hay, Grain, Feed and Produce.



Elk Milling and Produce Company

Manufacturers of Meal and Feed, and Wholesale Dealers in Flour, Grain, Hay, Straw and Produce.



Hutchinson-Stephenson Hat Company
Wholesale Hats, Gloves and Umbrellas.



Prince, Mahan & McClure
Manufacturers and Wholesale Confectioners.



The H. O. Baker Company

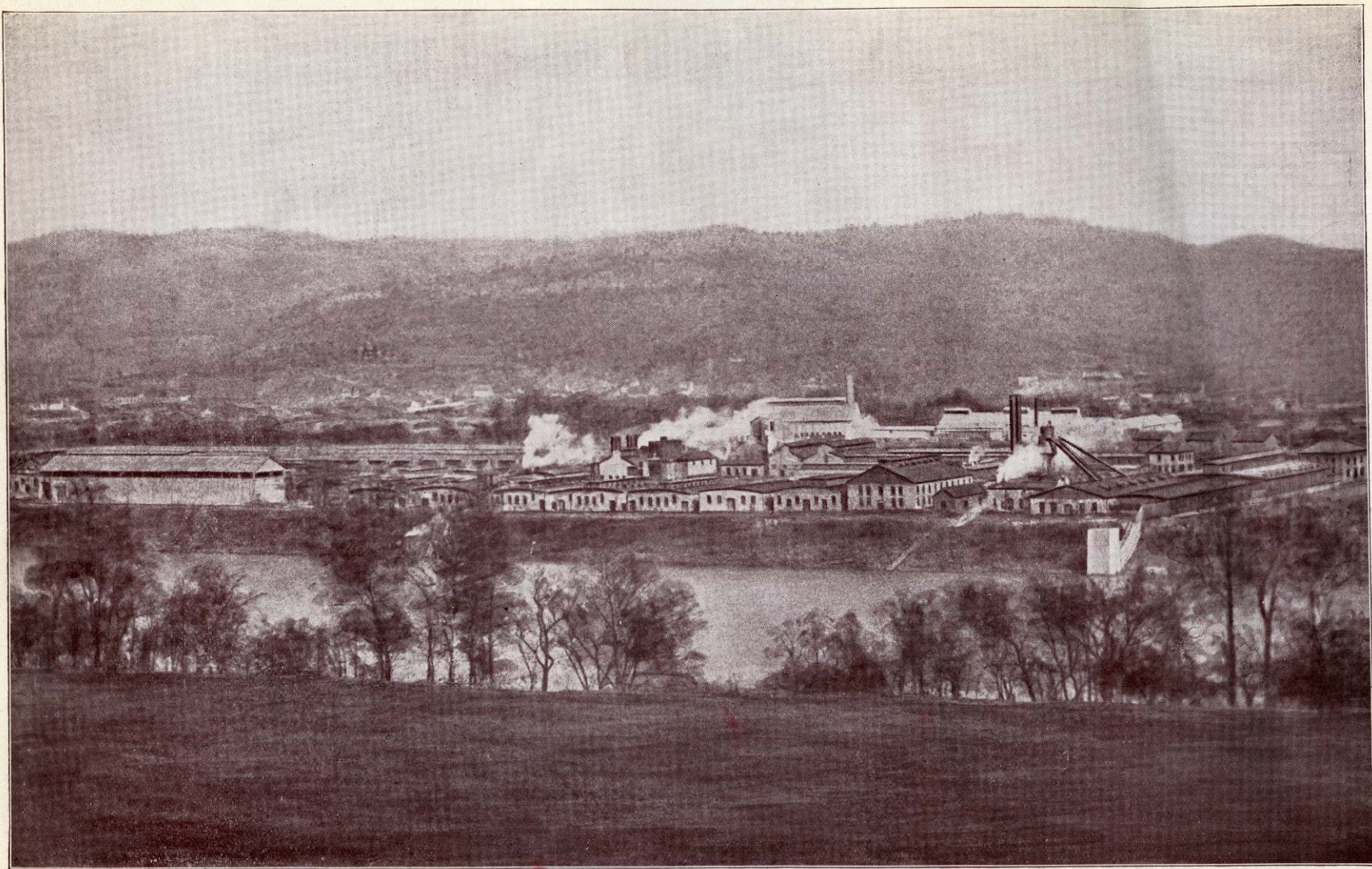
Wholesale Furniture and Queensware. Quarrier and Hale Streets.



The H. O. Baker Company

Wholesale Furniture, Rugs and Queensware.

Warehouse No. 1, Wilson Street and K. & M. Railway.



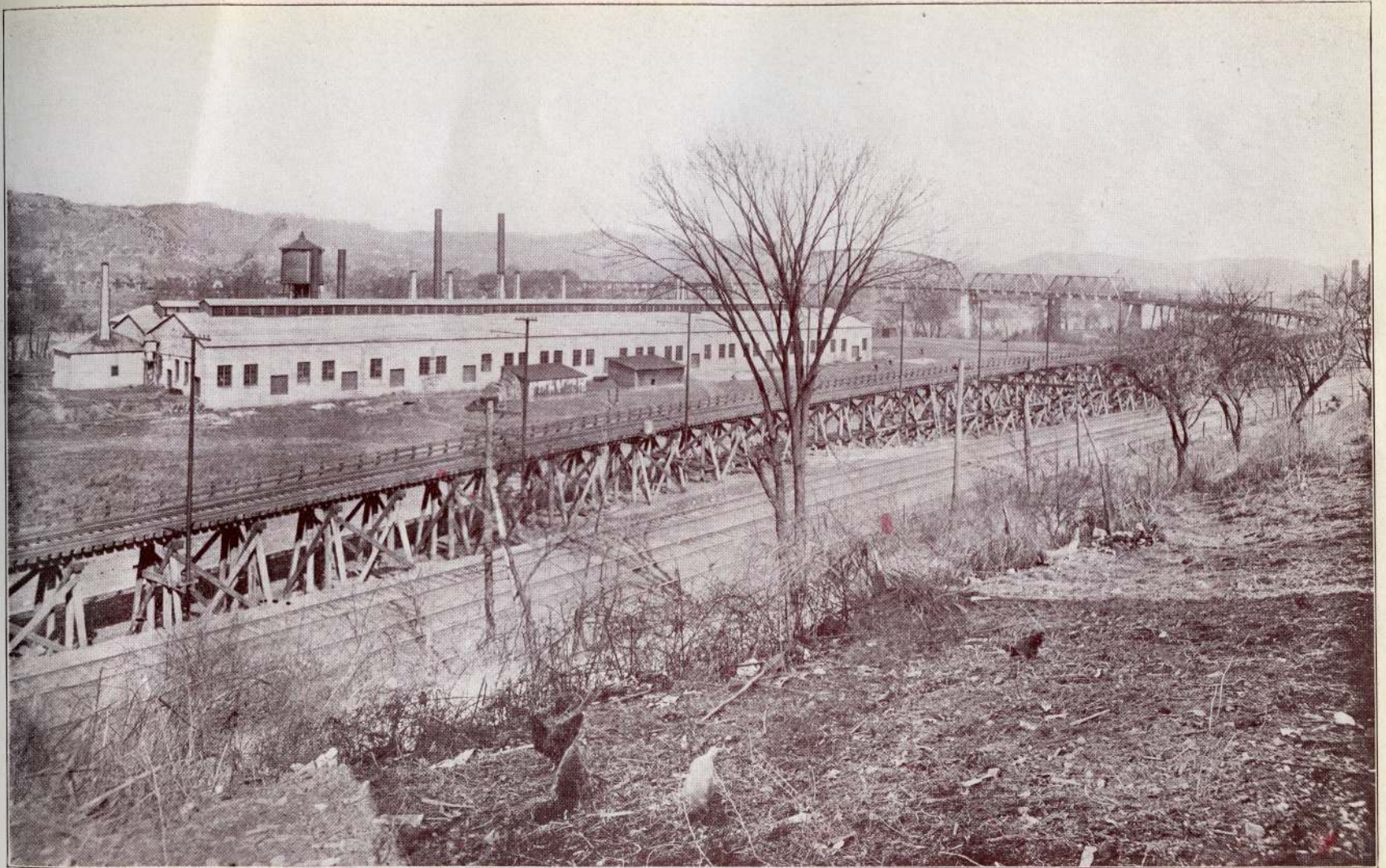
Kelly Ax Manufacturing Company



Kanawha Brewing Company



Pfaff & Smith Company



Kanawha Land Company

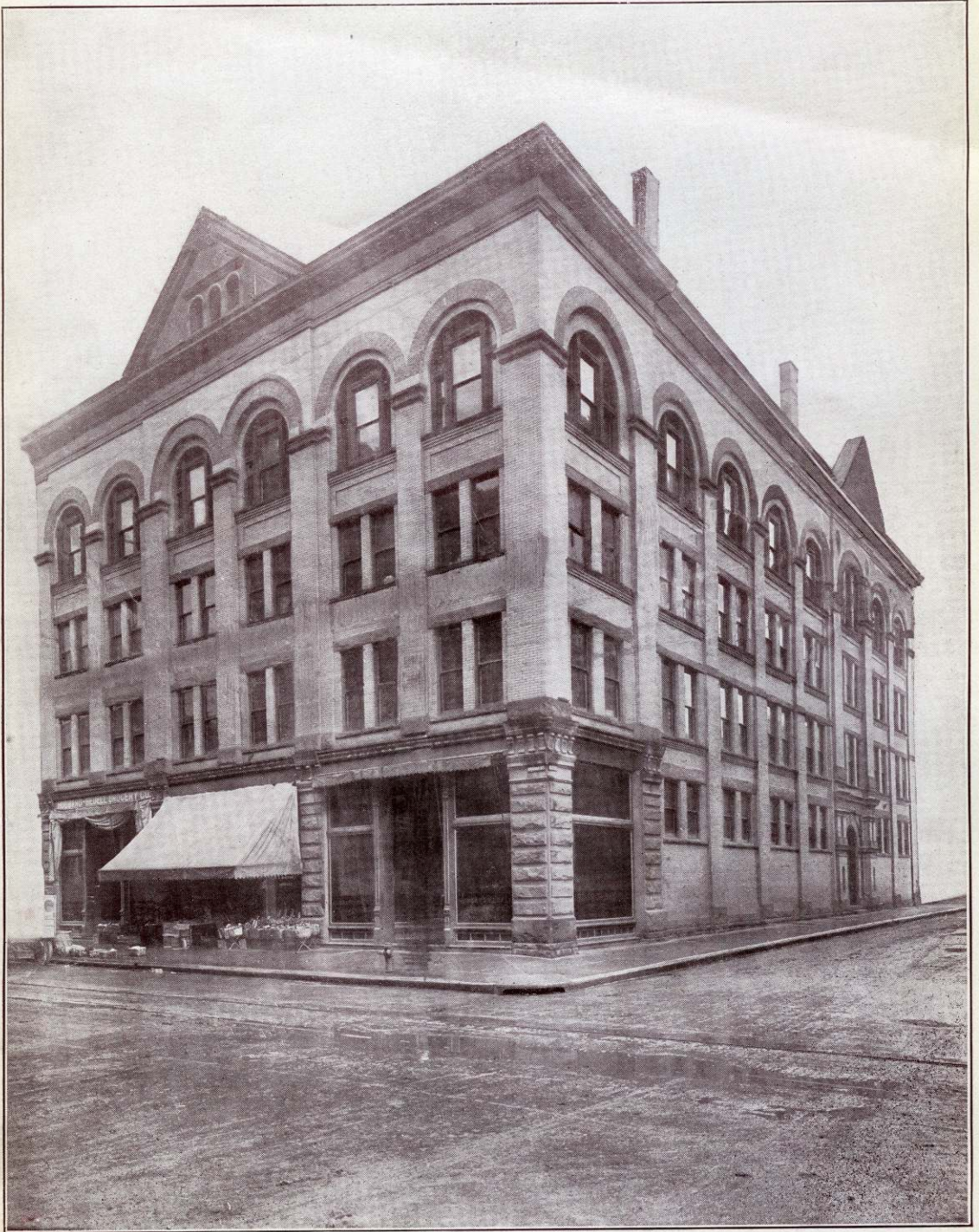
South Charleston Bridge



Thomas Shoe Company (Wholesale)

The Leading Brand, "EXPERT SHOE."

"It is not the name that makes the shoe good, but the shoe that makes the name good."

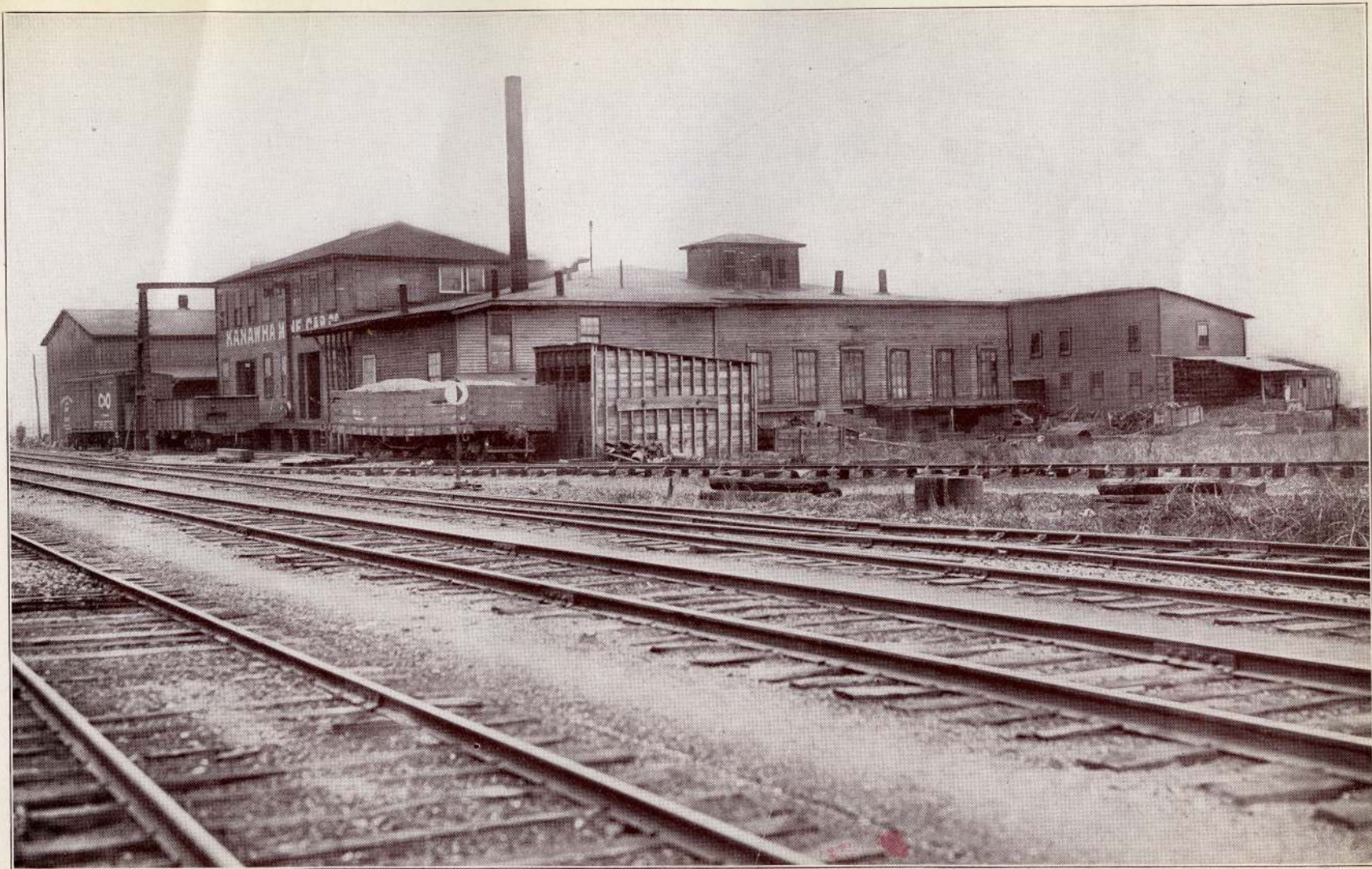


Hubbard-Bedell Grocery Company, Wholesale Grocers
822 Virginia Street.



South Side Foundry and Machine Works

Mine Equipment and Supplies, Incline Drums, Monitors, Fans, Screens, Chutes, Etc. Castings and Repairs.



Kanawha Mine Car Company



Yellow Pine Lumber Company

Wholesale Dealers.

North Carolina and Georgia Pine Interior Finish. Sash, Doors, Frames, Etc. Rough and Dressed Lumber.



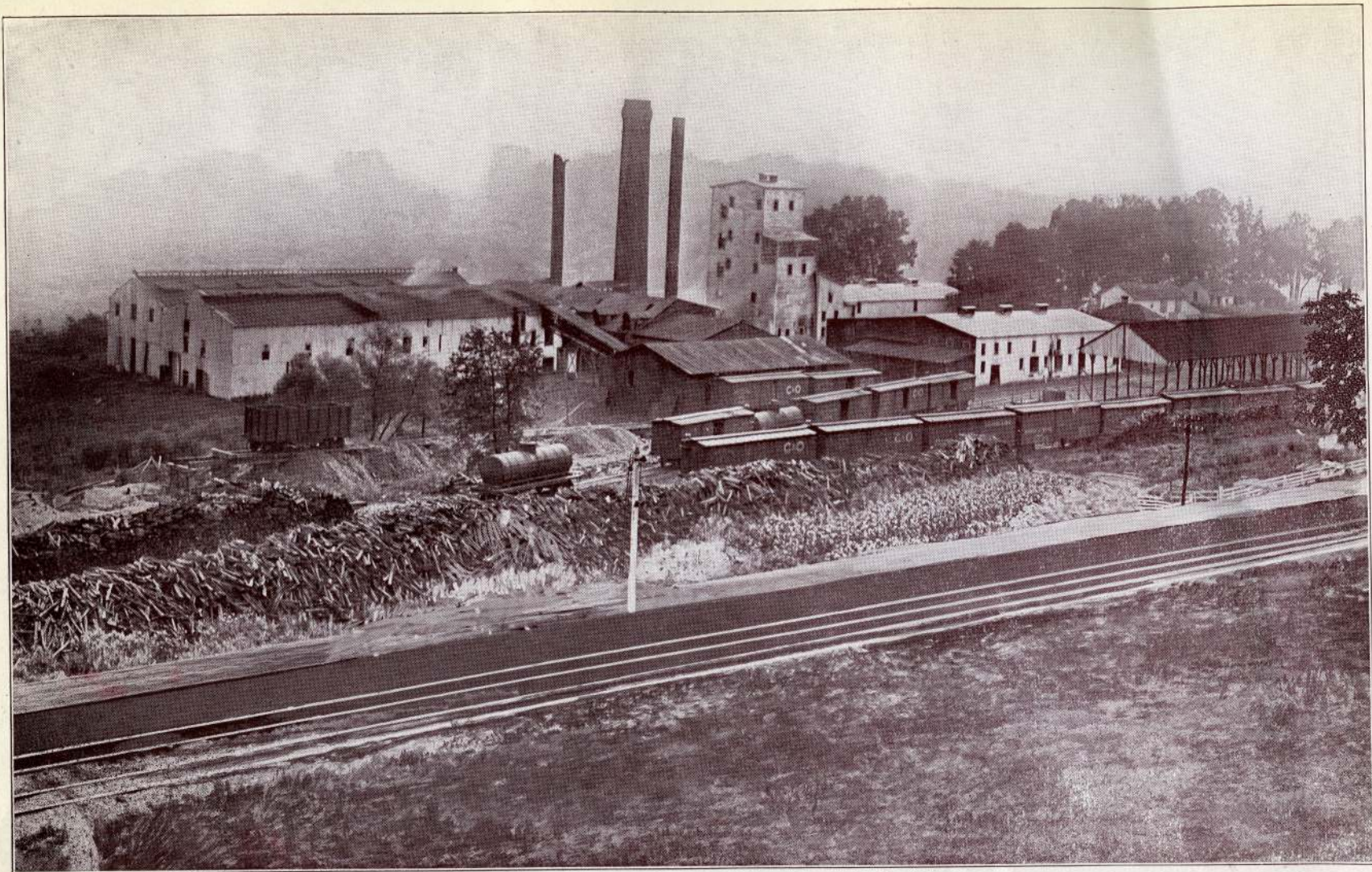
Ohio Valley Furniture Company



Morgan Lumber and Manufacturing Company
Manufacturers of Interior Finish and Furniture. Mill Work of All Kinds.



Virginian Electric and Machine Works

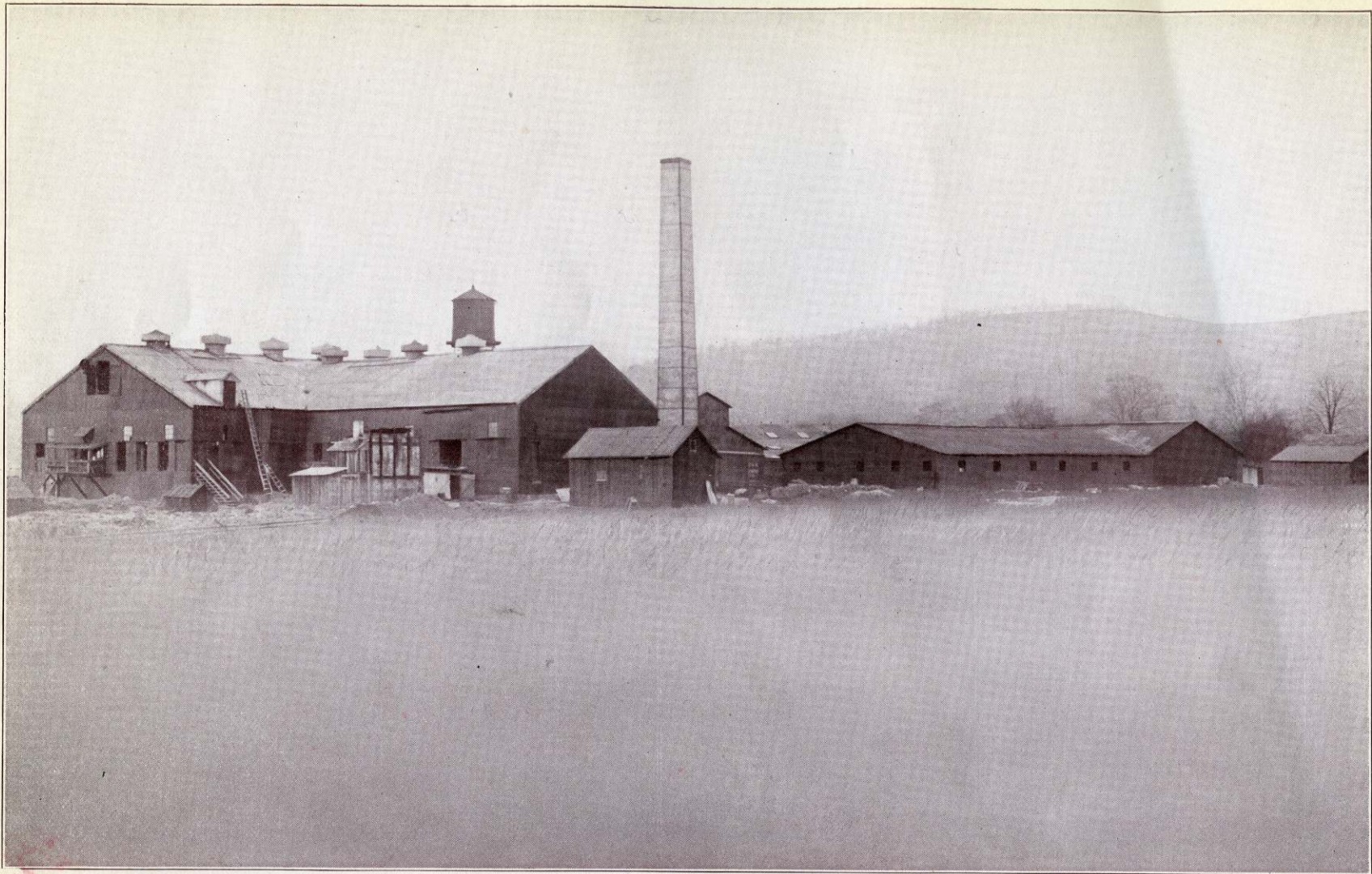


Plant of The Tanners & Dyers Extract Company

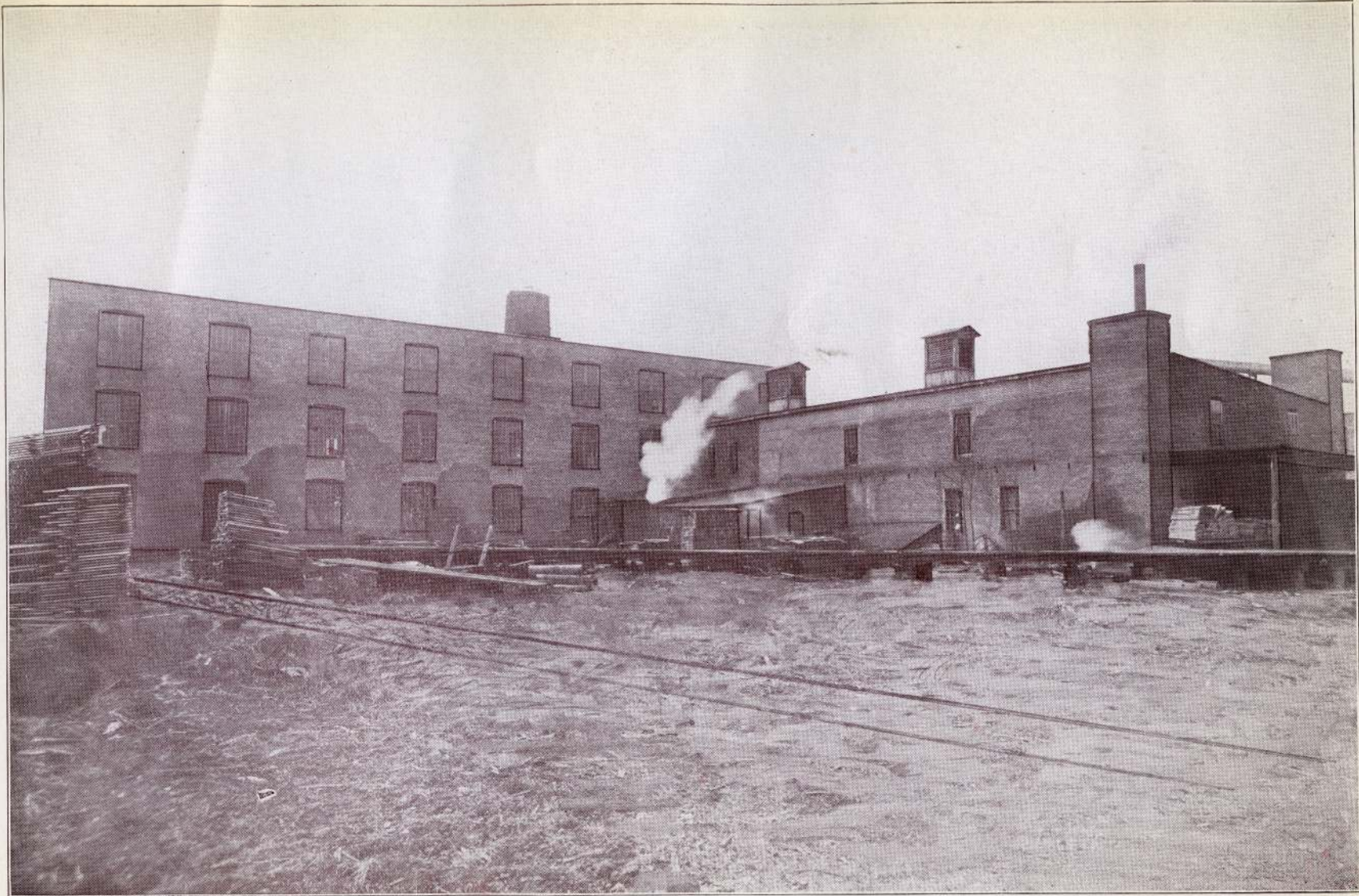
**Manufacturers of Refined Chestnut Oak Bark Extract for Tanning High-Grade Oak and Union Leathers. Annual Capacity, 30,000 Barrels.
Established 1891.**



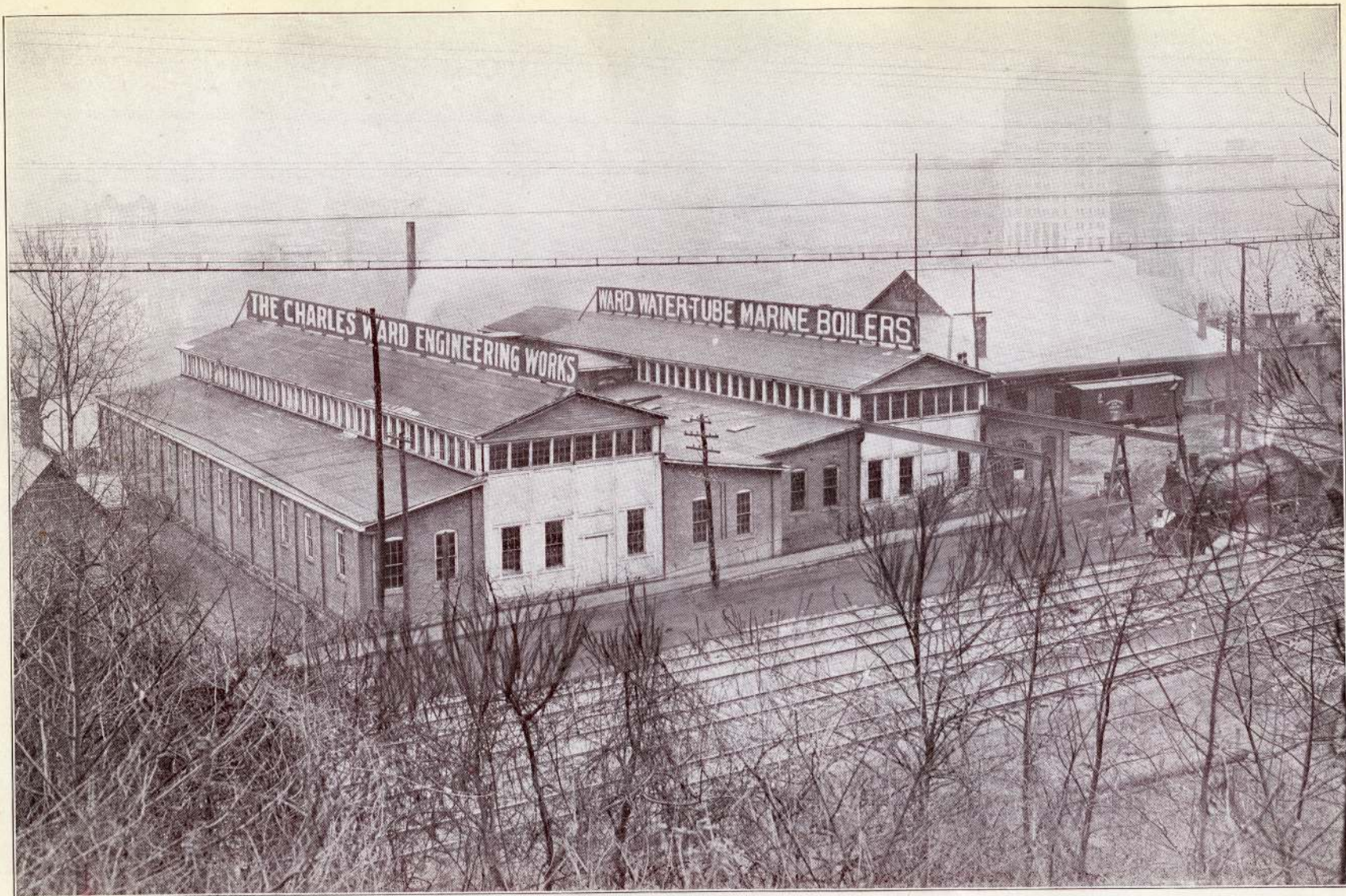
Kanawha Planing Mill Company



Banner Window Glass Company



National Veneer Company



The Charles Ward Engineering Works

Water-Tube Boilers, Marine Engines, Light Draft River Steamers.



Dunkirk Window Glass Company
Manufacturers of Window Glass.



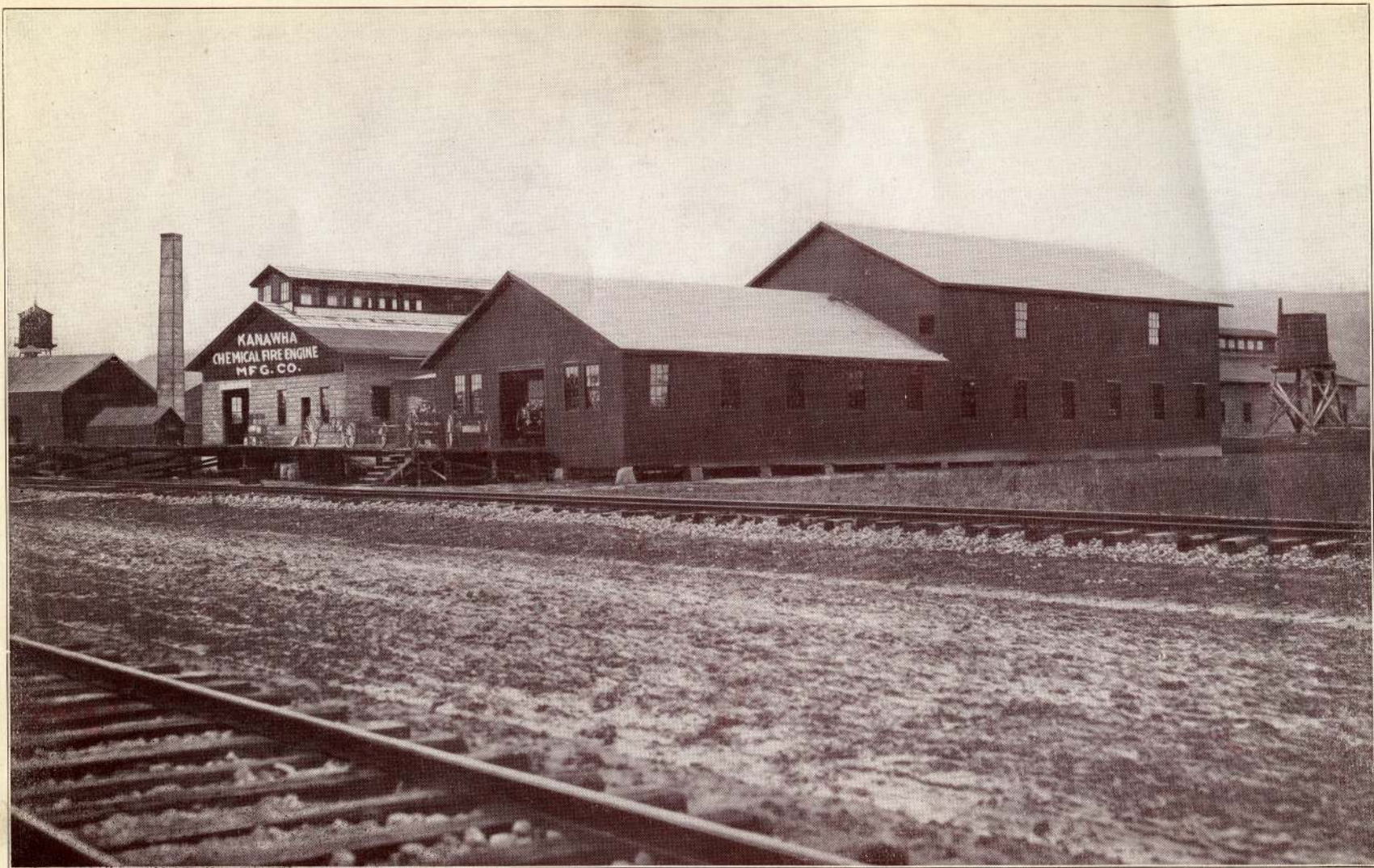
Diamond Ice and Coal Company

Manufacturers and Shippers of Diamond Ice

Capacity 150 Tons Daily. Cold Storage Capacity 150,000 Cubic Feet



The Charleston Lumber Company



Kanawha Chemical Fire Engine Manufacturing Company



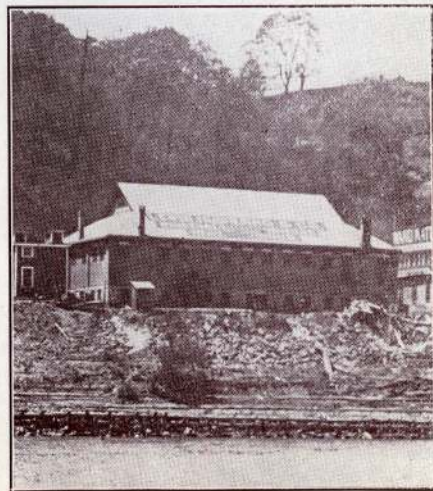
Kanawha Chemical Fire Engine at Central Station



Lewis, Hubbard & Company
Wholesale Grocers.



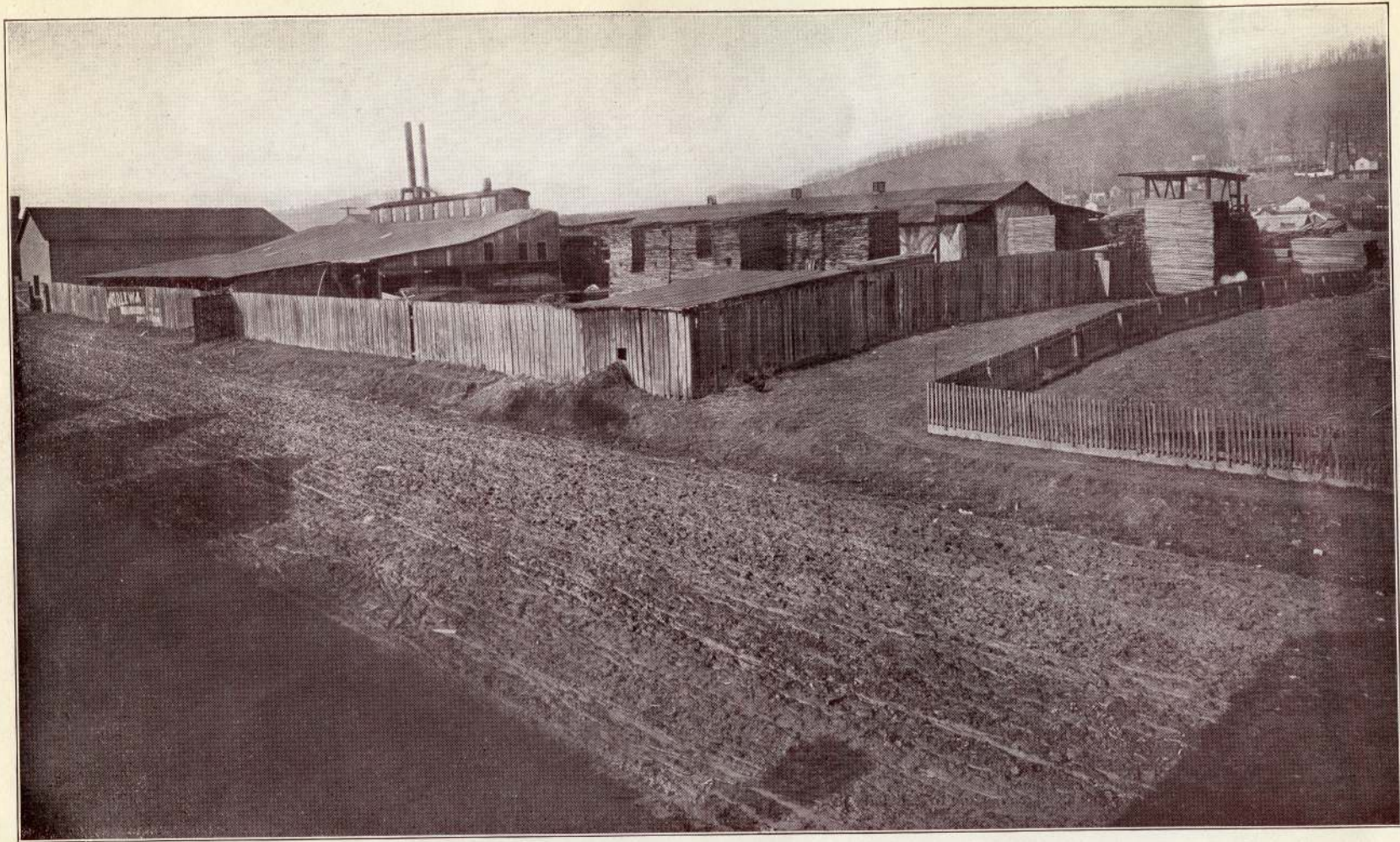
Lowenstein & Sons
Wholesale Hardware and Manufacturers of Harness.
Established 1863.



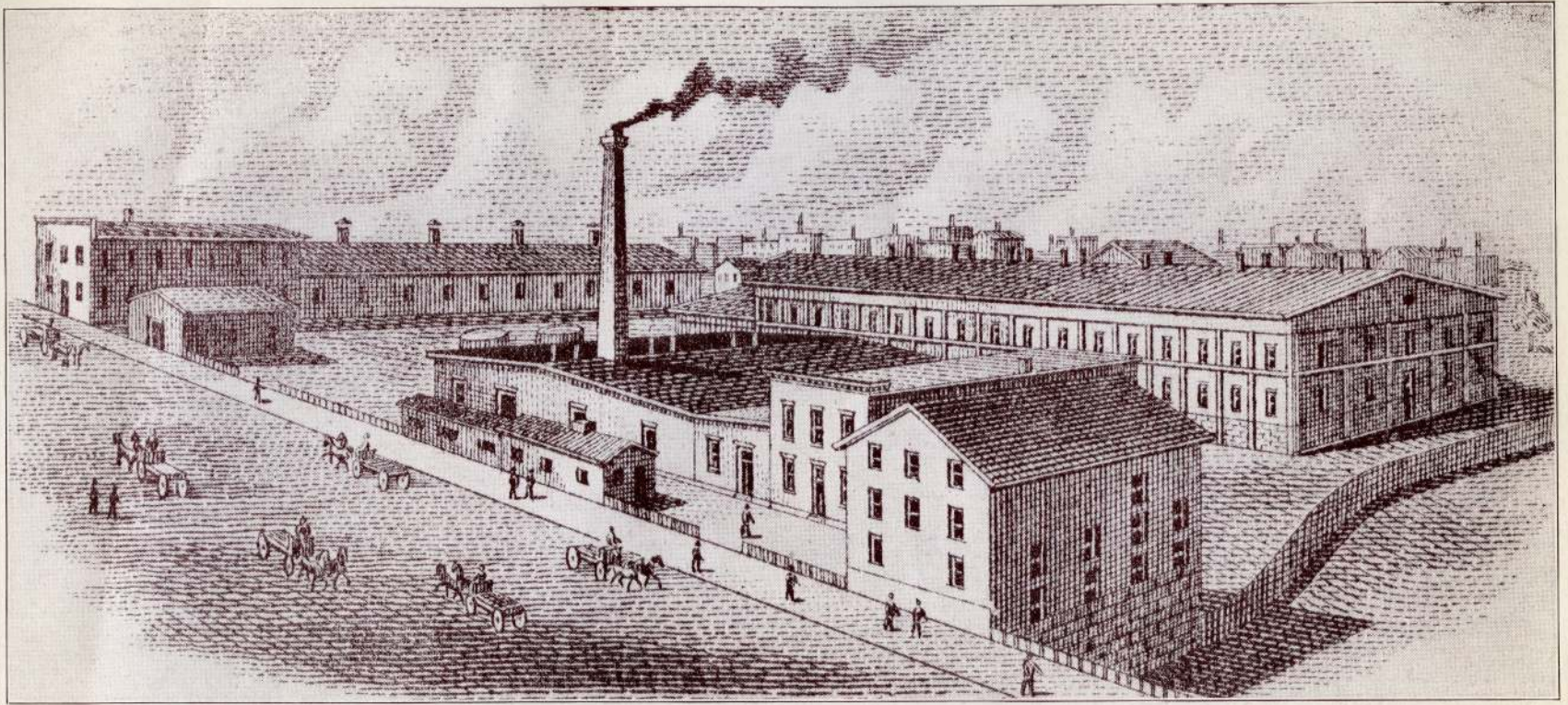
Lewis, Hubbard & Company
Warehouse.



Charleston Electrical Supply Company
Machinery, Supplies and Repairing.



F. Lory & Sons Planing Mill



Kanawha Woolen Mills and Machine Shops

All Wool Hosiery Yarns, Jeans, Flannels, Linseys, Blankets.

Wrought Iron Fences, Steamboat Ratchets, Log Brands, Mandrels, Pulleys, Shafting, Etc. Cylinders Bored, Valves Planed.

All Kinds of Iron and Machine Work.



Vulcan Iron Works
Boiler Works, Machine Shops and Foundry.



Warwick, Barrett & Shipley Company

Fifty Stores in All.

Issued by the

CHAMBER OF COMMERCE

CHARLESTON, W. VA.

Published by

CINCINNATI ILLUSTRATED PUBLISHING CO.

1 9 1 1

COMPLIMENTS OF

Morgan Lumber & Manufacturing Co.

MANUFACTURERS OF

Interior Finish and Furniture

Mill Work of All Kinds

CHARLESTON

WEST VIRGINIA