

256

# The Real Wheeling



MARKET AUDITORIUM

Nineteen Thirteen

L-404



West Virginia University

I. C. White Library

No. L-404

# WHEELING'S STORY

---

---

Told in Eloquent Facts *and*  
Convincing Figures



Printed for the Public by

WHEELING BOARD *of* TRADE

## The Cities

The Cities are full of pride,  
Challenging each to each—  
This from her mountain side,  
That from her burthened beach.

They count their ships full tale—  
Their corn and oil and wine,  
Derrick and loom and bale,  
And rampart's gunflecked line;  
City by city they hail:  
"Hast taught to match with mine?"

And the men that breed from them  
They traffic up and down,  
But cling to their cities' hem  
As a child to the mother's gown.

When they talk with the stranger bands,  
Dazed and newly alone;  
When they walk in stranger lands,  
By roaring streets unknown;  
Blessing her where she stands  
For strength above their own.

On high to hold her fame.  
That stands all fame beyond,  
By oath to back the same,  
Most faithful—foolish—fond;  
Making her mere-breathed name  
Their bond upon their bond.

—Rudyard Kipling.

## Foreword

The Board of Trade presents this booklet of facts and figures about Wheeling so that its true size, its substantial advantages and solid achievements may be known by all who wish to know.

Though the United States census in 1910 gave us a population of 41,641, Wheeling is in reality a community about four times that size, and stretches north, south, east and west over the Ohio river and state lines. The census cannot go beyond legal boundaries, and so Wheeling does not get credit for her real extent and true proportions, even though some of its suburbs are as much a part of the city as some of its wards.

Wheeling's area is small,—a little over three square miles,—and annexation plans have not yet been realized, but though a greater city would help the situation in uniting West Virginia suburbs under our name and government, our strong and aggressive neighbors in Ohio can never be made legally one with Wheeling.

Our suburbs within the five-cent fare limit of a splendid trolley system include West Virginia towns such as Warwood, with several plants of national reputation; Fulton, with the largest packing house east of Chicago; Benwood, with steel corporation and independent mills employing nearly six thousand men; and in Ohio cities like Martins Ferry, Bridgeport and Bellaire with a combined population of over 30,000 and big industries of the steel cor-

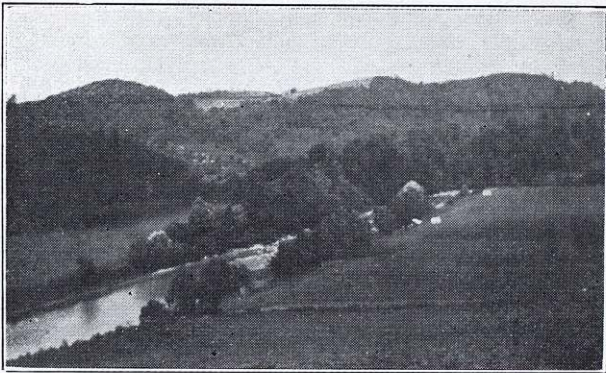
poration, large glass factories, enameled ware plants, bridge works and other industries employing thousands of work people.

These are only a few of many and are mentioned because they are typical of Wheeling's suburban situation which makes the city so strong financially, industrially and commercially.

Aside from this, Wheeling is in the midst of an excellent farming district and within a short distance of the real country with green fields and running brooks, lovely valleys and hills, which present a landscape that cannot be surpassed anywhere and which invite one into God's out-of-doors, all the year round.

We of Wheeling believe we have a goodly city which has much to offer the manufacturer and the merchant, the home-seeker and the investor.

It has great resources and splendid advantages in everything that goes to make a city great and a people happy, and its latchstring is out to men who want opportunity and to money which is seeking safe investment.



A BIT OF SCENERY NEAR WHEELING

# WHEELING BOARD OF TRADE

ORGANIZED 1900

Assembly Room and Offices, South End Market Auditorium

## OFFICERS

### President

W. B. IRVINE

Vice-President National Bank of West Virginia

### First Vice-President

C. H. DOWLER

Dowler & Dowler, Bonds and Real Estate.

### Second Vice-President

FRED J. FOX

Cashier, Security Trust Co.

### Secretary-Treasurer

R. B. NAYLOR

### Assistant Secretary

R. E. BYRUM

## DIRECTORS

SEATON ALEXANDER

Alexander & Co., Shoes

CHAS. A. BOWERS

Cashier, South Side Bank

J. HAROLD BRENNAN

Attorney-at-Law and City Solicitor

ROBERT M. BROWNE

Member Browne Bros., Tailors

E. B. CARNEY

President Windsor Hotel Co.

ANDREW S. HARE

Cashier and Director, Natural Gas Co. of West Va.

ROBERT HAZLETT

Postmaster

GEORGE HOOK

President Germania Half-Dollar Savings Bank

A. T. HUPP

Vice-President Speidel Grocery Co.

GEORGE O. NAGLE

Vice-President Wheeling Traction Co.

JOSEPH R. NAYLOR

Secretary John S. Naylor Dry Goods Company

JOHN H. RENNARD

President, John H. Rennard Advertising Co.

FRANK W. NESBITT

Lawyer and Former Judge of Circuit Court

OTTO SCHENK

Vice-President and Manager, F. Schenk & Sons  
Packing, Co.

CHAS. H. WATKINS, Jr.

President Palace Furniture Co.



ONE OF WHEELING'S BIG BANKS

## The Real Wheeling

Wheeling, West Virginia, located in the beautiful Ohio Valley, is one of the solid and substantial cities of the country and has long enjoyed a high reputation for the extent and variety of its commerce and industry. The city has 43,000 population with 100,000 in the immediately suburbs in West Virginia, Ohio and Pennsylvania. It is the chief city and commercial and industrial center of a State of great resources, noted for the production of coal, oil, gas and lumber and rapidly taking high rank for industrial development and horticultural progress.

Wheeling was settled about 1769 by Col. Ebenezer Zane and two brothers, and the town grew up about Fort Henry, established by them at the top of what is now Main street hill, the site having been appropriately marked with a tablet by the State. The fort was the scene of the last battle of the Revolution when it was unsuccessfully attacked by a force of British and Indians.

The city had its first impetus because it was located at the head of navigation on the Ohio river, and was for a long time the western terminus of the Old National Road, Baltimore being on the eastern end. The National Road was the most important avenue of commerce over the mountains, prior to the railroads, and after its extension to Columbus, Indianapolis and St. Louis, a constant stream of commerce flowed over the highway. Wheeling was the

first point reached by the railroads on the Ohio river, and was for some years the western terminal of the Baltimore & Ohio, the first road to cross the Alleghany mountains.

The city was established as a town in 1795 and incorporated in 1806. A charter was granted in 1836. It is the county seat of Ohio county.

The city was loyal to the National Government during the Civil War, and the new State was born here. The first convention of delegates from the loyal counties of Western Virginia met in Wheeling May 13th, 1861, and inaugurated the movement which finally resulted in the admission of West Virginia as a State June 20th, 1863.

Wheeling was the capital of the new State, having occupied that position from 1863 until 1870, when Charleston was selected as a more central point. However, in 1875 it was again the seat of government, but in 1885 removal again took place to Charleston, and there it has since remained.

### **Industrial and Commercial Facts**

The principal industries of Wheeling are the manufacture of iron, steel, tinplate, nails, glass, enameled ware, pottery and tobacco products, while there are many others of importance, among them the largest proprietary medicine concern in the world. Steel and iron manufacture began here in 1825 on a small scale, influenced by cheap fuel and excellent transportation facilities, and has grown steadily and substantially, until today the United States Steel Corporation with five large plants and several independent concerns, such as the Wheeling Steel & Iron Company, the Whitaker-Glessner Company and the LaBelle Iron Works, turn out enormous tonnage which has an ever widening

market. A new \$1,000,000 sheet and tinplate plant is in course of construction, with local capital behind it. The first glass was made here in 1821, and the city is now the center of a great glass industry, employing about 6,000 people and turning out wares annually valued at \$8,000,000. The Wheeling stogie originated here about 60 years ago, and the business has grown to great proportions, 140,000,000 being made annually. In the smoking and chewing tobacco line, Wheeling has one of the largest plants in the world, turning out a single brand. Among other industries may be mentioned large foundries and machine shops, tin can factories, stamping works, meat packing plants, modern breweries, a calico printing works, tool works which sell their wares as far apart as Norway and Argentine, enameled ware plants of growing importance and ketchup and preserve factories which have made Wheeling famous. Auto truck and engine factories are recent acquisitions to our industries. The city possesses advantages and facilities which have built up many large and substantial industries and which invite both capital and labor to a promising field.

The jobbing and retail trade of the city is large and constantly expanding and reaches probably \$20,000,000 annually according to conservative estimates. The territory served embraces three States, and the houses in all lines of business are modern and up-to-date in every respect. Many retail stores are models in construction and management, and would do credit to the largest cities of the country. The banking facilities are large and ample, and complete figures regarding them will be found on another page.

## Railroad Facilities

The district is served by three of the most prominent and aggressive trunk lines in the country, viz:

The Baltimore & Ohio system, with its main lines and its Cleveland, Lorain & Wheeling, Ohio River and Wheeling & Pittsburg divisions. The Pennsylvania system, P., C., C. & St. Louis and Pennsylvania connections; Cleveland & Pittsburg, and Pittsburg, Fort Wayne & Chicago connections, also its Ohio Valley branch. The Wabash interests, through the Wheeling & Lake Erie railway.

In addition to these, we have the Ohio River & Western railway, and the Wheeling Terminal railway, the latter a belt line connecting with all lines and principal industries in the district. The Lake Erie, Alliance & Wheeling has been built to Dillonvale, 18 miles northwest of Wheeling, and rights-of-way have been secured to bring the road practically into Wheeling.

Wheeling has Pittsburg freight rates on hauls 100 miles or more distant, and local rates within the 100-mile radius are, generally speaking, the same as those to and from Pittsburg for similar distances.

Through its excellent transportation facilities, Wheeling is near the great markets of the country and by superior passenger service, the city is two hours from Pittsburg, five from Cleveland and Columbus, eight and one-half from Cincinnati, ten and one-half from Baltimore, twelve from New York and Philadelphia, and fourteen and one-half from Chicago. A quick local freight service is provided, all lines loading daily, way cars which make next day deliveries at points on their lines within 100 miles. The through fast freight merchandise service to and from large commercial centers is

excellent, as the following approximate freight deliveries prove: Pittsburg, Cleveland and Toledo, next day; New York, Philadelphia, Baltimore, Washington, Cincinnati, Columbus and Chicago, second day; St. Louis and Louisville, third day; Boston, fifth day. For the delivery, as well as forwarding of miscellaneous merchandise in car lots, large well-equipped public team truck yards are maintained by all lines, conveniently located and reached by paved streets, and the suburbs are also well provided for in that respect.

Great improvements have been made by all lines within the last few years to enable them to keep pace with the constantly growing tonnage and travel, the B. & O. alone spending between \$2,000,000 and \$3,000,000, and many more are contemplated for the near future.

The street railway system of the two companies, the Wheeling Traction and the West Virginia Traction & Electric Company, embraces 125 miles, running east and west 25 miles and north to south 28 miles, and bringing the whole tri-state district in touch with Wheeling. The service has done much for the up-building of Wheeling and the promotion of trade, and will continue to make Wheeling bigger and better.

The Ohio river is navigable most of the year, and recent improvements by the completion of two government dams north and south of the city will increase its usefulness. A third dam is now being built just above the town.

### **Coal, Gas and Electric Power**

Wheeling has an abundance of cheap fuel, both coal and natural gas. The former has been mined for many years and was the basis of our first industrial success. The city is in

the heart of a great coal field which contains the richest steam coal to be found anywhere, and 15,000 men are employed in the mining industry within a radius of 20 miles. The pay rolls run \$1,500,000 a month. As within the radius indicated, it is estimated there are 4,000,000,000 tons unmined, the supply is practically inexhaustible. Wheeling offers an advantage here that cannot be surpassed and \$1.00 coal is the rule. Many plants have mines at the furnace door.

Natural gas introduced here in 1886 comes from West Virginia and Pennsylvania, and is sold at reasonable rates. The consumption for domestic and industrial use is very large, and it is the fuel par excellence.

In addition, cheap electric power and light are available and a large company operates one of the largest and best equipped plants in the country for furnishing this modern industrial necessity.

### **Government and Taxation**

Wheeling's government is based on a charter passed in 1907, and drawn on modern lines. Considerable powers are vested in a Board of Control, consisting of Mayor and two others, elected by the people, with a City Council made up of ward representatives. The board system has been entirely done away with, and practically all city business is done under the direction of the Board of Control. The city owns public utilities in the way of water works, gas plant, electric light works and city crematory. There are 47 miles of streets with 30 paved with brick and asphalt and the rest with cobble, gravel or macadam. The city government is located in the former State capitol, a fine building at the corner of Sixteenth and Chapline

streets, which is also used as a county court house. The total valuation of property in Wheeling on a true and actual basis is over \$65,000,000, the valuation of real property increasing \$6,000,000 the past five years.

Wheeling has a low tax rate, the total levies amounting to 96 $\frac{3}{4}$  cents per \$100, a low city debt and much valuable city property. The city debt amounts to a little over \$1,000,000 and the valuation of municipal property unencumbered \$2,191,000.

### **The City's Health**

Wheeling is in the same latitude as Philadelphia and enjoys a healthful and temperate climate with few extremes of heat and cold. The city, lying at the foothills, is well drained and the public health, guarded by a fearless and energetic Health Department, is excellent. The actual resident death rate in 1912 was 13.7 per thousand, which is among the lowest in the country. The milk supply is regulated by ordinance, which is so rigidly enforced that no city gets better milk, and the effect has been most beneficial, especially in reducing infant mortality. Certified milk is also furnished under the auspices of the Certified Milk Commission. The health department provides for garbage collection, for fumigation in contagious disease, distributes antitoxine free to physicians for use in families unable to purchase it, and in many other ways safeguards the health of the community.

### **Schools and Churches**

Sixty years ago Wheeling was one of the first southern cities to establish free schools, and has developed an admirable system of public education with night schools, domestic

science and manual training. There are seven grammar schools, which prepare for High School work, a High School and a separate grade school and High School for colored children, all occupying twelve buildings. The new High School building, erected at a cost of \$125,000, is a model in construction and arrangement. There are 5,682 children in the public schools, including 444 in the High School. There are besides these, 12 Catholic educational institutions in the city and eastern suburbs, and the Linsly Institute, a collegiate preparatory school for boys, and Mt. de Chantal Academy for girls, an excellent institution a few miles east of the city, in charge of the Sisters of the Visitation. A State Normal School is at West Liberty, 10 miles from Wheeling, and Bethany College, with a splendid agricultural school is located at Bethany, 16 miles from the city.

There are 51 churches, representing many different denominations, the Roman Catholic ranking first, with Methodists, Lutherans and Presbyterians next in the order named. There are two public hospitals and several private ones; several orphanages and many other charitable institutions which are doing great work. A new Y. M. C. A. building, costing \$175,000, has recently been opened and the Y. W. C. A. has acquired property on which a modern building is being erected. A new and modern City Hospital, costing \$260,000, will soon be completed. The money for this worthy project was raised in an eleven-day campaign and reflects the energy, civic pride and charitable impulses of our people.

In the line of civic activities, the Wheeling Playground Association operates four modern and well equipped playgrounds, and a movement is on foot for the city to undertake an

extension of the system through its excellent Park and Playground Commission. The Associated Charities, well supported by the people, conducts relief work on systematic business principles, with trained officers in charge. A well organized Woman's Department Club is active in many lines. The Ohio County Anti-Tuberculosis League owns a hill top east of the city on which a well equipped sanitarium is operated.

### **Halls, Theatres and Hotels**

The Market-Auditorium, between Tenth and Eleventh streets, in the heart of the city, is the latest addition to Wheeling's fine public buildings, and was erected through the efforts of the Board of Trade. It is the largest building in the State, 506 feet long and 52 feet wide, covering the center of a city square in the Second ward and combines a modern market of 70 stalls, with a convention hall, seating 3,500 people. It furnishes a splendid place for conventions, exhibits, etc. The city operates an excellent market in the Fifth ward.

Wheeling has a dozen hotels, of which the McLure at Twelfth and Market streets, is the largest and best known, the others like the Stamm, Brunswick, Grand Central and Antler are also first-class and cater to a good trade. A new up-to-date hostelry, 12 stories high and containing 200 rooms, is now being constructed on the Windsor site on Water street and the new hotel will be known as the Windsor. The stranger in Wheeling may find excellent accommodations at reasonable prices, and the rates do not advance when large crowds come to conventions or other gatherings.

There are three theatres in Wheeling, as follows:

Court Theatre, Board of Trade building, Twelfth and Chapline streets, open winter season.

Victoria Theatre, corner Thirteenth and Market street, open all the year.

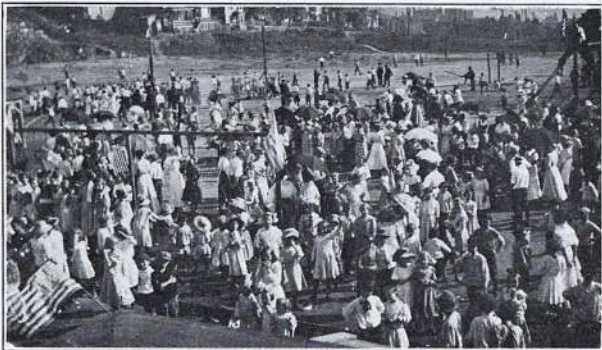
The Orpheum, at Fourteenth and Market streets, open all the year.

There are ten moving picture houses which are doing a good business.

There are four club houses, the Fort Henry, at Fourteenth and Chapline streets; the Elks, at No. 32 Fifteenth street; the Carroll, at Thirteenth and Chapline streets; the University, at 1107 Chapline street; the Columbia, Market street, below Twentieth, and the Arion, at Twentieth and Main streets. The Country Club has a splendid club house and golf grounds five miles east of the city.

The leading secret orders are strong, and the Masons, Odd Fellows, and Knights of Pythias own buildings. The Scottish Rite order has a magnificent Cathedral at Fourteenth and Byron streets, in which the Masonic Club has quarters.

The Mercantile Club has fine rooms in the Board of Trade building.



A WHEELING PLAYGROUND

# Wheeling's Principal Suburbs

(West Virginia)

## WELLSBURG

Wellsburg is in Brooke County, 16 miles north of Wheeling on the Ohio river, the Pennsylvania railroad and the PanHandle traction line running from Wheeling to Steubenville. It is the county seat of Brooke county.

Population .....	5,250
Assessed valuation of property.....	\$4,436,604.18
Tax rate .....	1.07½
Number of public schools.....	5
Number of churches.....	8
Number of principal industries.....	13
Estimated number of employes in industries .....	2,000

The principal lines of trade are the manufacture of glass and paper and coal mining.

## WARWOOD

Warwood, a new suburb which has grown up in the last decade, is located three miles north of Wheeling on the Ohio river, the Pennsylvania railroad and the PanHandle traction line. It lies within the 5-cent traction fare limit. The town is incorporated and has a splendid city water supply, taken from wells, paving, sewerage, natural gas and electricity.

Population .....	3,000
Assessed valuation of property.....	\$1,649,280
Tax rate, per \$100.....	1.10
Number of public schools.....	2
Number of churches.....	5
Number of industries.....	7
Employees .....	300

Principal industries, manufacture of tools, tin plate, auto trucks, etc.

## FULTON

Fulton adjoins Wheeling on the east and is located on the Wheeling Terminal railway, and the West Virginia Traction and Electric railway. Five-cent car fare. The town is incorporated and has all utilities in the way of paving, filtered water, gas, sewerage and electricity.

Population .....	1,100
Banks .....	1
Assessed valuation of property.....	\$567,550
Tax rate, per \$100.....	1.02½
School buildings .....	1
Churches .....	1

Industries, large packing houses, one of which is the largest establishment east of Chicago.

## ELM GROVE

Elm Grove is located five miles east of Wheeling on the lines of the Baltimore & Ohio railroad and the West Virginia Traction & Electric Co. Five-cent car fare to Wheeling. The town is incorporated and has all utilities, city water (filtered), natural gas, electricity and sewerage.

Population .....	2,200
Banks .....	2
Assessed valuation of property.....	\$1,088,085
Tax rate, per \$100.....	.96½
Number of schools.....	1
Number of churches.....	7
Number of industries.....	7

Principal industries, coal mining, lumber and manufacture of sanitary ware.

## BENWOOD

Benwood adjoins Wheeling immediately on the south, and is located on two lines of the Baltimore & Ohio and Pennsylvania railroads, and the Wheeling traction line running from Wheeling to Moundsville. The main line of the B. & O. from Washington to Columbus, etc., passes through the town. Benwood is incorporated and enjoys all public utilities.

Population .....	5,000
Banks .....	1
Assessed valuation of property.....	\$4,934,710
Tax rate, per \$100.....	.94½
Number of schools.....	3
Number of churches.....	3
Number of manufacturing plants.....	3
Estimated number of employes.....	5,700

Leading industries are plants of the U. S. Steel Corporation and the Wheeling Steel & Iron Co., turning out iron and steel products.

### McMECHEN

McMechen is located three miles south of Wheeling and adjoins Benwood immediately on the south. It is on two lines of the Baltimore & Ohio and Pennsylvania railroads, and the Wheeling traction line. Five-cent car fare to Wheeling. The town is incorporated and enjoys all public utilities.

Population .....	4,000
Banks .....	1
Assessed valuation of property.....	\$1,298,810
Number of schools.....	2
Number of churches.....	4
Number of industries.....	2

B. & O. car shops located here.

### GLENDALE

Glendale is located nine miles south of Wheeling on the banks of the Ohio river. It is a beautiful residence suburb and is located on two lines of the Baltimore & Ohio railroad and the Wheeling traction line running from Wheeling to Moundsville. The Reynolds Memorial Hospital is located here, and is one of the finest in the State. It enjoys all utilities in the way of natural gas, electricity, sewerage and water.

Population .....	1,200
Schools .....	1
Churches .....	2
Manufacturing plants .....	3

Principal products corrugated ware and coal.

## MOUNDSVILLE

Moundsville is located ten miles south of Wheeling on two branches of the B. & O. railroad and the Wheeling traction line. It is a prosperous and progressive community, and showed a growth of 66% the last decade. It is the site of the State Penitentiary and a famous Indian Mound.

Population .....	9,000
Banks .....	5
Assessed valuation of property.....	\$7,310,930
Number of schools.....	4
Number of churches.....	7
Number of industries.....	11
Number of employes.....	3,000

Principal industries, glass, enamel ware, brick and coal.

## MARTINS FERRY

(Ohio)

Martins Ferry is located on the banks of the Ohio river just opposite the north end of Wheeling. It is located on the lines of the Pennsylvania, Wheeling & Lake Erie and Wheeling Terminal railway, and there are two lines of the Wheeling Traction Company from Wheeling to Martins Ferry. The city is supplied with pure water and has all other public utilities.

Population .....	12,000
Banks .....	3
Assessed valuation of property.....	\$8,736,770
Tax rate, per \$100.....	1.32
Number of schools.....	5
Number of churches.....	15
Number of principal industries.....	20
Number of employes.....	7,000
Monthly pay roll.....	750,000
Coal mines .....	5
Number of employes.....	2,800

Two large mills of the American Sheet & Tin Plate Co. are located in Martins Ferry, and big plants of the Whitaker-Glessner Co. and Wheeling Corrugating Co. The new Wheeling Sheet and Tin Plate Co. is located just north of the city.

## BRIDGEPORT

Bridgeport lies just opposite Wheeling on the banks of the Ohio river. The lines of the Baltimore & Ohio and Pennsylvania railroads pass through the city. Also three lines of the Wheeling Traction Company. Five-cent car fare to Wheeling. All public utilities including city water.

Population .....	4,800
Banks .....	3
Assessed valuation of property.....	\$3,518,085
Tax rate, per \$100.....	1.44
Number of schools.....	4
Number of churches.....	7
Number of industries.....	3

There are 2,500 miners employed in and about Bridgeport.

## BELLAIRE

Bellaire is situated on the banks of the Ohio river just opposite the south end of Wheeling, and is a thriving industrial community, the largest in Belmont county. The lines of the Baltimore & Ohio and Pennsylvania railroads pass through the city. A line of the Wheeling Traction Company runs from Wheeling to Bellaire, giving a five-cent car fare.

Population .....	14,000
Banks .....	3
Assessed valuation of property.....	\$11,919,490
Tax rate, per \$100.....	1.30
Number of schools.....	10
Number of churches.....	11
Number of principal industries.....	19

Twelve coal mines employing 3,000 men. Principal industries, iron and steel, glass and enameled ware, Carnegie Steel Co. and Imperial Glass Co. being the largest. An enormous coal industry lies back of the city.

## SHADYSIDE

Shadyside adjoins Bellaire on the south, and is on the lines of the Pennsylvania railroad and the Wheeling Traction Co.

Population .....	2,000
Banks .....	1
Number of schools.....	1
Number of churches.....	5
Number of industries.....	2

Principal industry, coal mining.

## Financial Strength of the Wheeling District

Wheeling and the following cities and towns are connected by 5 cent trolley service, located within a five-mile radius of the city building, and are a part of Wheeling's great industrial and financial system :

Name	No. of Banks	Capital	Surplus	Deposits	Loans and Securities	Total Resources
WHEELING, W. VA.....	14	\$2,575,000	\$3,421,000	\$23,650,000	\$24,499,000	\$32,473,000
Elm Grove, W. Va.....	2	70,000	107,000	636,000	668,000	692,000
Benwood, W. Va.....	1	25,000	6,000	115,000	113,000	139,000
Fulton, W. Va.....	1	25,000	2,000	81,000	77,000	90,000
McMechen, W. Va.....	1	25,000	7,000	125,000	126,000	141,000
Warwood, W. Va.....	1	22,000	.....	29,000	43,000	47,000
Bellaire, Ohio .....	3	350,000	219,000	2,625,000	1,441,000	3,134,000
Bridgeport, Ohio .....	3	200,000	155,000	2,102,000	2,000,000	2,402,000
Martins Ferry, Ohio.....	3	100,000	96,000	1,138,000	1,160,000	1,384,000
<b>GRAND TOTAL .....</b>	<b>29</b>	<b>\$3,392,000</b>	<b>\$4,013,000</b>	<b>\$30,601,000</b>	<b>\$30,127,000</b>	<b>\$40,502,000</b>

# Financial Institutions

WHEELING'S BANKS OLD IN EXPERIENCE AND  
MODERN IN METHODS

## NATIONAL

	Established
National Bank of West Virginia.....	1817
National Exchange Bank.....	1899

## STATE

Bank of the Ohio Valley.....	1875
Center Wheeling Savings Bank.....	1901
City Bank of Wheeling.....	1886
Commercial Bank .....	1869
Dollar Savings & Trust Co.....	1887
German Bank .....	1870
Germania Half Dollar Savings Bank.....	1896
Mutual Savings Bank.....	1887
Peoples Bank .....	1861
Quarter Savings Bank.....	1901
Security Trust Co.....	1903
South Side Bank.....	1890

## Wheeling's Big Clearings

Wheeling ranks sixty-fifth in bank clearings in the United States, though one hundred and seventh in population. The following table of exchanges from the Wheeling Clearing House Association records are evidence of our increasing prosperity. The record for the last nine years is as follows:

Exchanges for 1912.....	\$105,130,551.00
Exchanges for 1911.....	90,579,693.00
Exchanges for 1910.....	90,318,477.53
Exchanges for 1909.....	80,890,086.78
Exchanges for 1908.....	72,600,000.30
Exchanges for 1907.....	57,455,311.80
Exchanges for 1906.....	53,229,030.04
Exchanges for 1905.....	41,335,368.93
Exchanges for 1904.....	36,569,029.23

(The above does not include Suburban Banks.)

## Building Permits

The building permits issued by the city building inspector reflect the steady growth of the city. The figures for the past three years on amounts involved are as follows:

1910 .....	\$ 901,442.00
1911 .....	959,543.00
Increase .....	\$ 58,101.00
1912 .....	1,286,640.00
Increase .....	327,097.50

The figures for Greater Wheeling would double this statement.

## Revenue Receipts

The revenue receipts at the office of the deputy collector reflect our large trade in lines affected and convey an idea of the great volume of our stogie industry for which the city is justly famous. The figures below give in five-year periods the total sales of stamps, stogie sales and number manufactured, and show conclusively the steady and substantial growth:

1902—

Total collections .....	\$ 872,411.00
Stogie revenues .....	260,048.00

According to these figures, 86,663,000 stogies were manufactured in 1902.

1907—

Total collections .....	\$ 959,542.00
Stogie revenues .....	347,036.00
Stogies manufactured during 1907.....	115,678,000

1912—

Total collections .....	\$ 1,184,367.00
Stogie revenues .....	411,118.00
Stogies manufactured during 1912.....	137,039,000

# Wheeling's Industrial Strength

AS SHOWN BY THE  
GOVERNMENT CENSUS *of* 1910

Value of products, . . . . .	\$27,077,000
Capital invested, . . . . .	19,297,000
Cost of Materials Used, . . . . .	16,025,000
Value Added by Manufacture, . . . . .	11,052,000
Salaries and Wages, . . . . .	5,503,000
Miscellaneous Expenses, . . . . .	3,166,000
Average of Wage Earners, . . . . .	7,809

The average increase in these items was 20% in the last decade, and the Real Wheeling would more than double these figures.

# Population Statistics

## OF CITIES AND TOWNS WITHIN A RADIUS OF 25 MILES OF WHEELING

The following cities and towns, with a combined population of upwards of 200,000, are within a radius of 25 miles of Wheeling, closely connected by trolley and railroad, with a five-cent fare in the majority, and Wheeling is the shopping, jobbing and industrial center of the section:

Follansbee,	Brooke County	2,100
Wellsburg,	"	5,250
Bethany,	"	750
Beech Bottom,	"	200
WHEELING,	Ohio County	43,000
Warwood,	"	3,000
Fulton,	"	1,100
Leatherwood,	"	250
Woodsdale,	"	850
Edgwood,	"	850
Pleasant Valley,	"	250
Park View,	"	400
Mt. de Chantal,	"	400
Greggsville,	"	400
Elm Grove,	"	2,200
Patterson,	"	500
Triadelphia,	"	400
Valley Grove,	"	250
West Liberty,	"	400
Clinton,	"	100
Benwood,	Marshall County	5,000
McMechen,	"	4,000
Sherrard,	"	400
Glendale,	"	1,200
Moundsville,	"	9,000
Glen Easton,	"	300
Loudenville,	"	100
Cameron,	"	1,800
Majorville,	"	250
Dallas,	"	250
Martins Ferry,	Belmont County, O.	12,000
Bridgeport,	"	4,800
Bellaire,	"	14,000
Shadyside,	"	2,000
Wegee,	"	200

Barnesville,	Belmont County, O.....	4,200
St. Clairsville,	".....	2,000
Maynard,	".....	2,000
Barton,	".....	3,000
Neff's,	".....	1,800
Bethesda,	".....	1,200
Belmont,	".....	600
Glencoe,	".....	400
Riverview,	".....	200
West Wheeling,	".....	300
Brookside,	".....	300
Wheeling Creek,	".....	700
Lansing,	".....	500
Blaine,	".....	350
Crescent,	".....	200
Fairpoint,	".....	300
Bannock,	".....	250
Colerain,	".....	300
Florence,	".....	500
Gaylord,	".....	250
Burlington,	".....	250
Powhatan,	".....	500
Steubenville,	Jefferson County, O.....	24,000
Mingo,	".....	4,000
Dillonvale,	".....	2,500
Brilliant,	".....	1,500
Piney Fork,	".....	1,100
Smithfield,	".....	1,000
Mt. Pleasant,	".....	1,000
Adena,	".....	800
Tiltonville,	".....	500
Rayland,	".....	400
Yorkville,	".....	400
Emerson,	".....	200
Cadiz,	Harrison County.....	3,000
Harrisville,	".....	400
New Athens,	".....	500
West Alexander,	Pennsylvania.....	700
Claysville,	".....	1,200
Taylorstown,	".....	500
West Finley,	".....	150
McCracken,	".....	200
Jacktown,	".....	300
		<hr/>
		182,600

## Fifty Facts About Wheeling

Wheeling was made a port of entry by Congress in 1831.

Wheeling's new post office and custom house cost \$600,000.

Wheeling's area covers 3 1-5 square miles, or 2050 acres.

Wheeling leads all cities of its size in volume of bank clearings.

Wheeling's new high school is one of the finest in the State.

There are 19,000 telephone subscribers in the Wheeling district.

Historic Bethany College is located 20 miles from Wheeling by trolley.

Ohio county merino wool took first prize at the Paris Exposition in 1900.

Minneapolis' biggest millers buy their flour sacks in the Wheeling district.

Splendid suburbs, easily accessible, offer fine opportunities for home-seekers.

The Schmulbach office building, 12 stories high, is the largest in the State.

Wheeling was one of the first cities in the country to use brick pavements.

Wheeling makes more stogies than any city in the country except Pittsburg.

One hundred passenger trains run in and out of Wheeling depots every day.

Wheeling's public library has 25,000 volumes and is complete and comprehensive.

The new Scottish Rite Cathedral is the finest fraternal building in West Virginia.

There are 450 automobiles in Ohio county and the number is increasing rapidly.

Wheeling manufactures 60 to 70 per cent of the lamp burners of the United States.

The Wheeling grocers are organized in a strong Association for mutual welfare.

A Wheeling foundry turned out \$2,000,000 worth of castings for the Panama Canal.

Site of Ft. Henry of Revolutionary fame marked by tablet at top of Main street hill.

The Ohio Valley Trades and Labor Assembly is the leading labor organization of the State.

Wheeling has live and energetic retailers organization which is doing fine work in its field.

The Wheeling District turns out more enamel ware than any other community in the country.

McColloch's Leap near the city is famed as the scene of a brave Indian fighter's exploit.

Wheeling is the home of the W. Va. State Fair which annually draws thousands of visitors.

Wheeling is a little above Mason and Dixon's line, but there is plenty of Southern hospitality here.

The Steel Bridge from Wheeling 'o the Island was designed by Ferris, of Ferris-wheel fame.

Wheeling has the largest plant turning out a single brand of chewing and smoking tobacco.

Wheeling gave more for San Francisco relief than any city of its size in the United States.

Wheeling is in the same latitude as Philadelphia and enjoys a healthful and temperate climate.

U. S. Engineer's office is located in Wheeling on Government dam work and employs 25 to 40 men.

Wheeling has several fine parks, notably Wheeling Park, five miles east, excellent for outings.

The coal mining industry of the district employs 15,000 men with a payroll of \$1,500,000 monthly.

The first pottery for the manufacture of white ware in West Virginia was established here in 1879.

Henry Clay Monument on the National Road erected 1820 in honor of his services to that great highway.

Wheeling contributed 260,000 to a fund for the new City Hospital, raised in an eleven-day campaign.

The freight and passenger revenue of the Wheeling District is the third largest on the B. & O. system.

Wheeling is 660 feet above the level of the sea and country is rolling with hills, rising as high as 1400 feet.

One of the largest Indian mounds in the country is located in Moundsville, 12 miles south of Wheeling.

Big capitalists showed their confidence last year when \$7,000,000.00 was paid for purchase of local traction interests.

Wheeling Island, Seventh ward of the city, is one of the largest in the Ohio river and has nearly 8,000 population.

Waddington Farm, five miles east of Wheeling and consisting of 1,000 acres, is one of the finest farms in the country.

Wheeling has furnished one governor, a United States Senator, three attorney-generals and a State Treasurer to the State.

The Tri-State Poultry Association gives annual shows in Market Auditorium, which are attracting attention in the poultry world.

Wheeling has the largest proprietary medicine concern in the world, employing an army of people and turning out many well known remedies.

The first suspension bridge over the Ohio from Wheeling to the Island, 1010 feet long, was built in 1849 and was one of the wonders of the times.

Wheeling has four daily newspapers: Register and Intelligencer (morning); News and Telegraph (evening), which are metropolitan in make-up and news service and lead all others in West Virginia.

The Pan Handle Agricultural Club has recently been formed and financed at Wheeling and has employed agricultural experts to aid in agricultural development of Ohio and other Pan Handle counties.

B. & O. DEPOT SHOWING  
TRAIN-SHEDS / VIADUCT  
WHEELING, W.VA.

